

## PRECINCT H DESIGN GUIDELINES

## Medium Density Housing & Mixed Use Site



## Design Guidelines For Medium Density Housing and Mixed Use Site within Precinct H

Prepared by SLR Consulting for Frasers Property Australia and Shellharbour City Council

December 2022

The Medium Density Housing & Mixed Use Site Guidelines have been reviewed by officers of Shellharbour City Council and endorsed by Geoff Hoynes – Group Manager City Planning, Shellharbour City Council.



---

Signature

---

17 February 2023

Date

## Contents

1.0 Introduction .....	4	Key Controls - Medium Density .....	17	Sustainability .....	29	5.2 Front Landscaping .....	41
1.1 Purpose Of The Design Guidelines .....	4	Storage.....	18	Energy Efficiency .....	29	5.3 Rear Landscaping.....	42
1.2 Aim and Structure of the Guidelines .....	5	Articulation Zones .....	18	4.5 Exterior Design Palette .....	30	Appendix A - Glossary .....	43
1.3 Approval Process .....	6	Dwelling Orientation .....	18	Preferred Materials & Colours .....	31	Appendix B - Colour Palette .....	45
2.0 Precinct H Vision & Objectives..	7	Corner Lots .....	19	External Materials.....	32	Appendix C - Planting Palettes.....	46
2.1 The Waterfront Shell Cove.....	7	Detached Studios Above		4.6 Sun Shading and Other Details .....	33		
2.2 The Waterfront Shell Cove Vision ..	8	Garages/'Fonzie Flats'.....	20	Sun shading, eaves and screens.....	33		
2.3 Precinct H .....	10	Sloping Sites .....	21	Gutters and Downpipes .....	33		
2.4 Precinct H Desired Future Character & Medium Density Layout.....	11	Medium density adjoining public open space .....	21	4.7 Walls and Fences .....	34		
Site Access and Street Network .....	11	3.4 Mixed Use Site .....	22	Front Fences .....	35		
Views and Vistas .....	12	Key Controls .....	22	Corner Fences & Fencing to Lane ways	35		
Amenity .....	12	Design Requirements.....	23	Side and Rear Fences.....	36		
Open Space Treatment .....	13	4.0 Building Design & Landscape Character.....	24	Retaining walls .....	36		
Land Use and Building Types.....	13	4.1 Building Facades, Street Frontage & Character.....	24	Special Fencing (by Frasers Property Australia) .....	37		
3.0 Site Planning for Medium Density Housing .....	14	Coastal Character .....	25	4.8 Service Areas and Auxiliary Structures for Medium Density Dwellings .....	38		
3.1 Siting .....	14	Verandahs, Balconies, Balustrades .....	26	Aerials, Antennae and Satellite Dishes ..	38		
3.2 Building and Siting Principles .....	15	Dwelling Entry .....	26	Solar Water Heaters and Collectors .....	38		
3.3 Medium Density Housing controls .....	16	4.2 Garages and Driveways .....	27	Mailboxes .....	38		
Key Controls.....	16	Treatment and Screening .....	27	Storage and Bins.....	38		
Medium Density Housing - Objectives for Key Controls.....	16	Driveways.....	27	Services and Water Tanks.....	38		
		4.3 Roof Design .....	28	4.9 Site Distance for Driveways and Footpaths.....	39		
		4.4 Universal Design and Sustainability .....	29	5.0 Landscape Character .....	40		
		Passive Solar Design .....	29	5.1 Landscaping .....	40		



## 1.0 Introduction

### 1.1 Purpose Of The Design Guidelines

The purpose of the Medium Density Housing and Mixed Use Site Design Guidelines is to support the Shell Cove Concept Plan Approval MP 07\_0027 (as modified) in guiding development of Medium Density Housing and Mixed Use Development within Precinct H.

The Design Guidelines have been prepared as required by Schedule 3, Part D, Further Environmental Assessment Requirements No.1 under the Concept Plan Approval as modified. The approval requirement states:

*The proponent must submit detailed urban design guidelines for the project prepared by a suitably qualified architect or urban designer, for each stage. The guidelines must establish design controls which achieve the following where relevant to the particular stage:*

- Architectural diversity within all stages which complements the site's coastal context
- A variety of detailed designs which avoids monotones and repetition
- Design of the mixed use landmark (hotel) building and public square in the commercial precinct which define street and water edges, and create visual interest

- A mixed use landmark (hotel) building with a slender tower angled to maximise views to the coast to the north and south, reduce impacts on the boat harbour, and relate well to the areas existing urban form and which may comprise a 3–4 storey high podium
- Demonstration of a mix of dwelling types and sizes for each residential precinct, including consideration of affordable and adaptable housing
- Building separation, setbacks, solar access, visual and acoustic privacy, view corridors and an adequate level of environmental amenity
- Compliance with the Crime Prevention Through Environmental Design (CPTED) principles
- The location and distribution of car parks
- Where applicable, that SEPP 65 principles and the Residential Flat Design Code (now ADG) can be achieved
- Appropriate density, bulk, scale, textures and colours in relation to surrounding development, topography and streetscape
- Consistency with the NSW Coastal Policy 1997 and Coastal Design Guidelines NSW in terms of visual impact, bulk, scale and amenity
- Layout and design which satisfies the design considerations in *Healthy by Design: A Planners Guide to Environment's for Active Living*, National Heart Foundation of Australia
- Clear addresses for buildings fronting public walkways along the harbour and direct access from walkways where possible
- An indicative staging plan identifying the likely timing and sequence for each stage
- Buildings which address main avenues or boulevards and serviced by rear laneways/access ways to improve legibility and prevent gated communities
- Design and layout to minimise noise impacts to sensitive residential areas near the quarry boundary
- Demonstrate adequate on-site parking is provided for the mixed-use landmark (hotel) building, to not adversely impact on-street parking in the town centre and surrounding precincts."

These Design guidelines respond to the Modified Concept Approval Requirements applicable to Medium Density Housing.



## 1.2 Aim and Structure of the Guidelines

Frasers Property Australia has prepared The Waterfront, Shell Cove Precinct H Medium Density Housing and Mixed Use Site Design Guidelines to ensure the development of well-designed and sustainable homes in our new community.

The Guidelines set out the key priorities and principles in relation to medium density housing and mixed use site siting and design, access, landscaping and sustainability.

These Guidelines form a ‘manual’ for design and development at The Waterfront, Shell Cove and inform the approval process.

The Guidelines should be read in conjunction with the National Construction Code (NCC) and all relevant legislation and Australian Standards.

The Guidelines are set out as follows:

**Section 1** – Introduction, Aim and Structure of the Design Guidelines.

**Section 2** – Desired future character and the key design principles for medium density and mixed use site development.

**Section 3** – Site Planning, which provides general guidance on siting arrangements such as building types, access and building envelopes.

**Section 4** – Building Design & Architectural Character, which provides guidance on house design, character, and detailing.

**Section 5** – Landscape Character, which provides guidance on landscaping elements including planting and hardscape detailing.

**Appendices** – The document glossary, Waterfront Shell Cove colour palette, and landscape palette for Medium Density Housing and Mixed Use Development.

1

### INTRODUCTION

- Aim and Structure of the Guidelines

2

### DESIRED FUTURE CHARACTER

- Precinct H

3

### SITE PLANNING FOR MEDIUM DENSITY HOUSING & MIXED USE SITE

- Siting Requirements

4

### BUILDING DESIGN

- Architectural Character and Sustainability

5

### LANDSCAPE CHARACTER

- Landscape Character & Sustainability

### APPENDICES

- Glossary
- Building Facade Colour Palette
- Landscape Palette

### 1.3 Approval Process

The approval process for medium density housing and mixed use site within The Waterfront, Shell Cove, is indicated on the right.

These guidelines have been endorsed by Shellharbour City Council.

Following a review of the Design Guidelines and the preparation of an Development Application (DA), the first step is to arrange a pre-lodgement meeting with Shellharbour City Council (Council) to discuss the proposed housing.

The required DA documentation should then be prepared and be lodged with Council for approval. The DA should provide a description of the proposal and general compliance with the Design Guidelines outlined within this document.

Merit based assessment will consider variations to the guidelines where the relevant objectives and superior built form and/or improved environmental living outcomes are achieved including improved building bulk and scale.

Any variations will be considered by council as part of the DA assessment process.

Following the DA approval, a Construction Certificate (CC) approval from Council or a Principal Certifying Authority (PCA) will need to be issued before construction can commence.

Should variations to the design be sought after approval has been granted, a Section 4.55 Modification Application will need to be prepared and lodged with Council.

Future building extensions or renovations will also require approval by Council or Private Certifier.

Refer to Shellharbour City Council for further details regarding the approval process.

1

#### DESIGN DEVELOPMENT & PROPOSAL

- Review Design Guidelines
- Prepare a Pre-DA document package

2

#### PRE-LODGE MEETING WITH SHELLHARBOUR CITY COUNCIL

- Site Analysis, Site Plan and Floor Plans
- Preliminary drawings and Elevations with dimensions

3

#### ASSESSMENT OF DEVELOPMENT APPLICATION BY SHELLHARBOUR CITY COUNCIL

- Refer to Council for their DA submission requirements
- DA Approval

4

#### ISSUING OF CONSTRUCTION CERTIFICATE BY SHELLHARBOUR CITY COUNCIL OR PRINCIPAL CERTIFYING AUTHORITY (PCA)

- Council / PCA CC submission requirements
- CC approval

5

#### CONSTRUCTION

- Approved Construction Certificate from Council / PCA
- Construction
- Completion of Dwellings and Landscape

6

#### ISSUING OF OCCUPATION CERTIFICATE BY SHELLHARBOUR CITY COUNCIL OR PRINCIPAL CERTIFYING AUTHORITY (PCA)

- Approved Occupation Certificate from Council / PC

## 2.0 Precinct H Vision & Objectives

### 2.1 The Waterfront Shell Cove

*The Waterfront, Shell Cove is a master planned award winning residential community created by Frasers Property Australia and Shellharbour City Council. Located within the Illawarra Region of NSW just south of Wollongong, the coastal Shell Cove will become a home to thousands of people with a bustling boat harbour and marina.*



Figure 1: The Waterfront Shell Cove  
Source: Frasers



## 2.2 The Waterfront Shell Cove Vision

The Waterfront, Shell Cove and its Town Centre will create a major regional boating destination and waterfront marina lifestyle and social hub for both residents and the wider South Coast community.

The vision for the Waterfront, Shell Cove is to create a new vital coastal community, with a strong local and regional focus on the boat harbour, which is unique to the natural beauty of the Shellharbour Coastline.

The Waterfront, Shell Cove will embody a sustainable built environment that harnesses the natural qualities of the locality with a contemporary coastal character reflective of the relaxed lifestyle of the region.



Figure 2: Waterfront Shell Cove Vision  
Source: COX Architecture

The character of the Waterfront Precinct at Shell Cove should reflect the contemporary Australian coastal vernacular. It should be designed and built for the local climate, environment and lifestyle. There are several key features that are considered to be essential design elements in the Waterfront Precinct. These include:

- A balance of building types and heights which respond to the topography and natural setting;
- A design that is identifiable with, and has strong connections to its surroundings and wider setting;
- Designing sensitively, the interface with the public domain, to reinforce the integral connections to the natural landscape and relationships between built form and Harbour;
- Front and rear setbacks that encourage landscaping and porous views and vistas to natural elements including the Boat Harbour and Wetland Park;
- Large verandahs and alfresco areas that provide quality private open space and extend indoor living spaces in both front and rear setbacks;
- Materials that reflect the coastal location of Shell Cove i.e. weatherboards and lightweight cladding, timber elements, awnings, framing and balustrade elements;
- Contemporary facades and roof forms;
- A mix of eaves, pergolas, awnings and external louvres that respond to the Shell Cove microclimate and shade and protect windows and external living spaces such as verandahs and courtyards;
- Windows, doors and skylights appropriately sized and oriented to admit direct sunlight and allow cross ventilation;
- Glazing that supports the Australian conditions and supports the transition between indoor and outdoor living areas; and,
- Elements that will contribute to the distinctive character of Precinct H include building scale, articulated streetscapes, fencing, private open space courtyards, coastal colours and materials, and landscaping.

*Australian Coastal  
Diversity  
Connections  
Identity  
Sustainability  
Natural elements  
Views and Vistas  
Public Domain  
Boat Harbour*



## 2.3 Precinct H

Precinct H is located to the north of Boat Harbour, at the interface between existing surrounding low density residential development. Precinct H is distinguishable by a mix and diversity of distinctive architecture, detached housing on land, medium density housing and mixed use development.

Precinct H is characterised by detached, low density housing to the north and medium density dwellings and mixed use development on the southern area of the site.

Dwelling numbers and type are to be generally in accordance with Concept Plan Approval (07\_0027 as modified).

These guidelines have been prepared specifically for medium density housing and mixed use site within Precinct H as identified in Figure 3.



Figure 3: Artist's Impression of The Waterfront Shell Cove Precinct showing the location of Precinct H



## 2.4 Precinct H Desired Future Character & Medium Density Layout

The Precinct H layout, positioning and design outcomes are to promote and adhere to the coastal characteristics of Shell Cove. The Guidelines have provision for the Mixed Use Site and Medium Density Housing in Precinct H.

A mix of medium density housing typologies provides a variety of architectural expression within Precinct H complementing the coastal context.

Townhouses (front and rear loaded) are sited to respond to the street and reinforce the structure of the precinct.

The Medium Density housing has an east-west orientation. Housing lots closer to the harbour will include a frontage aspect that interfaces with the harbour. Pedestrian gates/access will be provided from the primary frontage of all medium density dwellings. Vehicular access to the medium density housing in Precinct H will be via a laneway. Garages and rear entry gates with off street parking and secondary pedestrian access.

Section 3, 4 and 5 of this document provide detailed site planning, building design, architectural and landscape character guidelines for medium density housing and mixed use site located in Precinct H, identified in Figure 4.



Figure 4: Illustration showing location of medium density housing, mixed use site and single detached dwelling lots in Precinct H. Source: LFA. Note: Figure 4 is indicative only. The detailed street layout, public domain areas / open space and dwelling lots are subject to future approval, including the subdivision DA. Structural works within the boat harbour are contingent on separate approvals.

### Site Access and Street Network

- Vehicular access to Precinct H is from Brigantine Drive, which provides east-west access from Harbour Boulevard. Additional access is available from Boolwarroo Parade.
- An open space link provides a pedestrian connection to the Harbour Promenade and marina.
- Local roads form a loose grid and provide access and address to all medium density housing.
- The hierarchy of streets and roads reinforce movement and the spatial structure of the The Waterfront.
- Garage access for buildings will occur primarily from rear laneways.

## Views and Vistas

- Vistas to the water are maintained along east-west aligned open space/ pedestrian corridors.
- Development should respond to the alignments and ensure adequate setbacks to maintain view corridors as per Table 2.

## Amenity

- Pedestrian and cycle connections to the Harbour Promenade run along the east-west aligned open space/ pedestrian corridors.
- Development provides a strong street address to the public domain and fronting public streets reinforcing the movement patterns within the Precinct.
- Pedestrian and cycle linkages and public open space is to be designed in accordance with the relevant crime prevention through environmental design principles.



## Open Space Treatment

The eastern area of Precinct H will also interface with the beach at Boolwarroo parade.

The western area of Precinct H interfaces with the boat harbour foreshore.

The landscaping/design of open space between the residential lots and the harbour perimeter path must:

- Be low maintenance.
- Have regard for Crime Prevention Through Environmental Design Principles – in particular it must be visually permeable, not provide concealment opportunities and pedestrian routes must be conducive to passive surveillance.
- Include legible pedestrian access between the harbour perimeter path and residential lots.

The landscaping/design of pedestrian pathways adjoining residential lots must:

- Be low maintenance.
- Have regard for Crime Prevention Through Environmental Design Principles – in particular it must be visually permeable, not provide concealment opportunities and must be conducive to passive surveillance.
- Include legible pedestrian access.

## Land Use and Building Types

- A mix of medium density housing typologies provides a variety of architectural expression within Precinct H complementing the coastal context.
- Dwellings such as apartments (as part of the Mixed Use Development), garden studios, Fonzie Flats, and townhouses (front and rear loaded) are sited to respond to the street and reinforce the structure of the Precinct.
- A mix of building heights are distributed throughout Precinct H, with medium density housing and mixed use development to provide heights of between 2 to 4 storeys.
- The modified concept approval requires a commercial and mixed use land use outcome for the mixed use site at the southern end of Precinct H. This site will potentially incorporate at ground level - dining, restaurants, cafes and retail premises to facilitate active frontages. The site will also potentially incorporate apartments, short term rental accommodation and serviced apartments.



### 3.0 Site Planning for Medium Density Housing

#### 3.1 Siting

Section 3 is concerned with the relationship of medium density housing to other development within the Precinct. It deals with the siting of buildings relative to surrounding development as well as considering the arrangement of elements of the buildings themselves. It considers the orientation of main living rooms and private open space, the location of garages, and the design of building envelopes.

Precinct H provides for a choice of housing options to meet a variety of lifestyle needs and family types. Where possible buildings have been sited to maximise views to the Harbour and respond to the landscape setting.

These design guidelines relate to the following living options or building types within Medium Density Housing Precinct H.

- Duplexes;
- Townhouses;
- Terraces;
- Small Lot Detached Dwellings;
- Zero Lot Dwellings;
- Secondary Dwelling (same title)
- Detached Studios

- Garden Studios/Corner Dwellings;
- Detached Studios above garages (Fonzie flats are to be a maximum of 8m by 7m);
- Secondary Dwelling – 1 bedroom studio above garage (separate title is to be a maximum of 11m by 7.5m).
- Apartments.

This document provides design guidelines for all medium density building typologies that are not governed by SEPP 65 and the NSW Apartment Design Guide.

Where Residential Flat Buildings are proposed, State Environmental Planning Policy No. 65 (SEPP 65) and the NSW Apartment Design Guide apply. Car parking rates will be set by the Shellharbour DCP.

Dwellings are sited to respond to the street and reinforce the structure of the precinct.

The key controls for the siting of medium density development are identified in Tables 1 and 2 and explained in the following pages and diagrams.



Terrace



Duplex and Terrace



Secondary Dwelling - 1 bedroom studio above garage (separate title)



Detached Studios Above Garages (Fonzie Flats)

### 3.2 Building and Siting Principles

Each building or dwelling should be designed to respond to its unique site conditions. It should be designed to respond to the slope of the land, views and vistas, breezes, solar orientation, access opportunities and any neighbouring amenity issues such as privacy or overshadowing.

The siting of dwellings will need to be carefully considered to address:

- Slope of the land and water run off;
- Slope of the land and orientation to views;
- Location of living spaces and gardens orientated for good solar access in winter and to provide sun shading in summer;
- Strong connection between living spaces and external spaces;
- Orientation to catch prevailing breezes in summer months and to protect from adverse weather;
- Setbacks to streets and lot boundaries;
- Access requirements of vehicles and pedestrians;
- Maximum building envelopes;
- Neighbouring dwellings; and
- Requirements of services and easements.

These considerations will vary depending on the dwelling type and its orientation.

For example, northern orientation is most desirable for living rooms and private open spaces. Where passive street surveillance and/or good views conflict with this, open/ flow-through living plans that maximise opportunities for dual aspect should be considered.

For mixed use buildings on lots adjoining public open space, windows from living spaces and bedrooms must be oriented to maximise casual surveillance of open space.

For 2 and 3 storey dwellings on lots adjoining public open space, upper level windows from living spaces and bedrooms must be orientated to maximise casual surveillance of the open space.

### 3.3 Medium Density Housing controls

Precinct H (Medium Density) provides for a range of sites suitable for medium density housing. The combination of controls aim to create a cohesive yet diverse streetscape and landscape character. These include the siting of the building, the building itself and it's landscape character.

#### Key Controls

A summary of key development controls for the siting of Medium Density development is set out in Table 2 and further illustrated under relevant sub-headings in the following pages. The objectives for the key controls are set out Table 1.

#### Medium Density Housing - Objectives for Key Controls

Element	Objectives
Lot Size	<ul style="list-style-type: none"> <li>To achieve an orderly subdivision pattern for Precinct H.</li> <li>To deliver the desired future character envisaged for Precinct H.</li> <li>To enable Precinct H to be developed to achieve an appropriate density in accordance with the concept plan approval as modified.</li> </ul>
Building Height	<ul style="list-style-type: none"> <li>To ensure the height of buildings complements the streetscape, the medium density urban character of Precinct H.</li> <li>To ensure the height of buildings maintains reasonable amenity to neighbouring properties in terms of visual bulk, access to sunlight, privacy and views.</li> <li>To protect identified public view corridors.</li> </ul>
Setbacks (Primary Street)	<ul style="list-style-type: none"> <li>To provide setbacks that reinforce the desired streetscape pattern and to allow for landscaping and open space to enhance the streetscape.</li> </ul>
Setbacks (Secondary Street)	<ul style="list-style-type: none"> <li>To ensure view corridors are maintained.</li> </ul>
Setbacks (Side)	<ul style="list-style-type: none"> <li>To maximise usable north facing private open space where possible.</li> </ul>
Setbacks (Corner Splay)	<ul style="list-style-type: none"> <li>To provide adequate solar access, visual privacy and appropriate building bulk.</li> </ul>
Setbacks (Rear)	<ul style="list-style-type: none"> <li>To ensure that the siting of buildings provides adequate separation for the amenity of residents and adjoining properties.</li> <li>To reinforce corner locations.</li> <li>To maximise amenity and minimise noise impacts for residents from busy roads.</li> </ul>
Private Open Space	<ul style="list-style-type: none"> <li>Dwellings provide appropriately sized private open space and balconies to enhance residential amenity.</li> <li>Private open space and balconies are appropriately located to enhance livability for residents.</li> <li>To provide Private Open Space that integrates with indoor living areas to promote outdoor living and functionality.</li> </ul>
Solar Access	<ul style="list-style-type: none"> <li>To enhance amenity by optimising sunlight to habitable rooms and private open spaces having regard to lot orientation, design constraints and opportunities.</li> </ul>
Car Parking	<ul style="list-style-type: none"> <li>Car parking is provided appropriate for the scale of the development.</li> </ul>
Storage	<ul style="list-style-type: none"> <li>To provide adequate, well designed storage in each dwelling.</li> <li>To allow flexibility for different residents' design and taste.</li> </ul>

Table 1: Objectives for medium density housing.



## Key Controls - Medium Density

Element	Parameters	Requirement	Measurement
<b>Lot Size</b>	Minimum	110m <sup>2</sup>	Minimum lot width 5.2m (these lots contain 2 bedroom/1 car space rear loaded dwellings)
<b>Building Height</b>	Storeys / height above natural ground level	Building heights are not to exceed the maximum height approved under the Concept Plan Approval (MP 07_0027) as modified. Wall height will be maximum 10.5m	
<b>Setbacks (Primary Street)</b>	Building Frontage	3.0 m	minimum
	Articulation Element	1.0 m	minimum
<b>Setbacks (Secondary Street)</b>	Building	2.0 m	minimum
	Articulation Element	1.0 m	minimum
	Garage Frontage (Secondary Street)	2.0 m	minimum (to garage door)
	Garage Frontage (Laneway)	0.5 m	minimum (to garage door)
<b>Setbacks (Side)</b>	Building	0.9 m	minimum
	Attached (Party Wall)	0 m	When attached or partially attached to another dwelling or garage (no maximum length)
	Zero Lot	0 m to 0.15 m	Small Lot Detached Housing, Fonzie Flats, Studio and Garages only (maximum 75% of lot length for maximum 2 storeys). 0m if it abutts another structure. 0.15 if it does not, with 0.9 to adjoining lots.
<b>Setbacks (Corner Splay)</b>	Building	1 m	minimum
	Articulation Element	0.5 m	minimum (including Garages/Fonzies)
<b>Setbacks (Rear)</b>	Building	4.0 m	minimum (measured to rear facade without Alfresco)
		4.5 m	minimum (measured to rear facade with Alfresco)
	Attached (Party Wall)	0 m	minimum
	Zero Lot	0 m to 0.5 m	Fonzie and Studio only (maximum 80% of lot width for maximum 2 storeys can be 0 setback)
<b>Private Open Space</b>	Per dwelling	16m <sup>2</sup>	minimum unobstructed dimension 3m
<b>Solar Access</b>	Living rooms or private open space	1sqm of glass or ground	A living room or private open space in each dwelling is to receive a minimum of 2 hours direct sunlight between 9am and 3pm on 21 June. Direct sunlight is achieved when 1sqm of direct sunlight on the glass or ground (within POS) is achieved for 15 minutes. To satisfy 2 hrs direct sunlight, 8 periods of 15 minutes will need to be achieved – the 15 minute periods do not need to be consecutive. A minimum of 75% of dwellings must be compliant.
<b>Car Parking</b>	2 bedroom rear-loaded dwelling	1 car space	Located on lot (unless otherwise agreed with Shellharbour City Council, a maximum of 2 are permitted within Precinct H, provided there is a street frontage that has on-street parking capacity).
	2 bedroom front-loaded dwelling	2 car spaces	Located on lot, Minimum 1 space covered
	3+ Bedroom dwelling	2 car spaces	Located on lot, Minimum 1 space covered

Table 2 is a summary of key controls for medium density development within Precinct H. This table must be read in conjunction with all detailed design guidelines outlined within this document. Variations to the above controls may be considered on a merit basis. Definitions of the terms used above are provided in Appendix A Glossary. \*Minimum lot size does not apply to separately titled studio above garage (secondary dwellings).

Medium density housing east of the laneway must address the primary street with architectural presentation.

Medium density housing west of the laneway must address the harbour foreshore with architectural presentation.

All medium density housing is to have passive surveillance over the laneway.

## Storage

<b>Storage</b>	Studio	4m <sup>3</sup>	<ul style="list-style-type: none"> <li>Space for storage may be found, however is not limited to the following locations: bedroom robes, linen cupboards, overhead or standard cupboards, study nooks, under stair storage areas, within garages, on balconies, and alfrescos</li> <li>Storage is to be accessible from either circulation or living areas</li> <li>Any storage provided on balconies is to be integrated into the balcony design, weather proof and screened from public view</li> </ul>
	1 Bedroom dwelling	6m <sup>3</sup>	
	2 Bedroom dwelling	8m <sup>3</sup>	
	3+ Bedroom dwelling	10m <sup>3</sup>	

## Articulation Zones

Articulation zones encourage architectural features which provide diversity to the building's facade and architecture.

Features such as ground level verandahs, porches, pergolas or alfresco areas may project a maximum of 2m forward of the front building line and setback. With the exception of alfresco areas, such features may be combined with upper level balconies within a dwelling to provide visual interest, weather protection and sun shading.

Rear setbacks should incorporate a deeper articulation zone of 4.5m to allow for generous backyard alfresco areas. If no alfresco is provided, rear setback is 4m.

The design guidelines encourage a design led approach to the incorporation of verandahs, porches and balconies. Where the front setback is greater than the 3m minimum requirement, verandahs, porches and balconies can increase their projection equivalent to the distance the 3m is exceeded by, provided it can be demonstrated that the projection will not have any adverse impact on the streetscape character.



Figure 5: Articulation zones for medium density housing  
Source: Fraser's Property

## Dwelling Orientation

Dwelling orientation refers to the position of a building and its internal spaces in relation to the site, the street, the subdivision layout, neighbouring buildings and vistas. Building orientation influences the urban form of the street and building address, and directly affects residential amenity. Each house should be site responsive designed for its lot and take into account land slope, views, breezes, solar orientation, access opportunities and any issues such as privacy or overshadowing related to neighbouring properties.

The siting and orientation of dwellings will need to be carefully considered to address the following key considerations:

- maximise northern orientation including for living areas and private open space.
- responding to the desired streetscape character with dwellings to be oriented towards the street.
- capturing views.
- promoting amenity for the proposed development and neighbouring properties by responding to acoustic, sunlight and overshadowing impacts.
- maximising solar access to the private open spaces.
- responding to the topography of the site.

These considerations will vary depending on each lot and orientation.

## Corner Lots

Where a building is sited on a corner allotment, its design must address both streets and 'turn the corner'. Different geometries, forms and setbacks should mark the corner location addressing both streets and facades. Elements such as windows, wall materials, colours, sunshades etc, should address and wrap around the corner.

- Splayed corners and corner emphasis can incorporate upper level projections or setbacks or different material expressions.
- Vehicular access is preferred from rear laneways (where available) or secondary streets.
- For garden studios, corner dwellings, garages for adjoining dwellings, may abut (with zero physical separation).

## Objectives

- Ensure development on corner lots reinforces this location by addressing both streets at ground and upper levels.

## Design requirements

- Corner lots are to have a minimum secondary street (side) setback of 2m minimum.
- The maximum length of a garden studio is 75% of the lot length.
- An articulation zone of 1m is allowed to the secondary frontage to encourage the incorporation of building elements that also turn the corner, for example projecting sun screens, balconies and pergolas.
- Windows from living areas and/or bedrooms on all levels to both the primary and secondary frontages to provide for passive surveillance to both frontages.



Figure 6: Development on Corner Lots.  
Source: Fraser's Property

Articulation zones may project 1m forward of the building line on secondary street frontage.

Minimum 2m side setback to secondary street

Building articulation element may project to 0.5m on splay corner

Front fences are to be designed to address both frontages



### Detached Studios Above Garages/‘Fonzie Flats’

Detached Studios above garages and ‘Fonzie flats’ may be located over double garages where accessed from a rear laneway or to the rear of corner lots with access from a secondary street.

Detached Studios/Fonzie Flats should only be located above double garages.

Detached Studios/Fonzie Flats which are separate dwellings may be on a separate title.

To ensure compatibility of scale, detached studios may be permitted only where the main dwelling on the block is two storeys or more.

### Objectives

- The materiality and form of the Fonzie Flats should be consistent with the main dwelling.
- Ensure that Fonzie Flats promote casual surveillance of laneways and secondary streets via windows and/or juliet balconies.
- Private open space, which may include Juliet balconies, is to be provided to Fonzie flats on a merit basis.

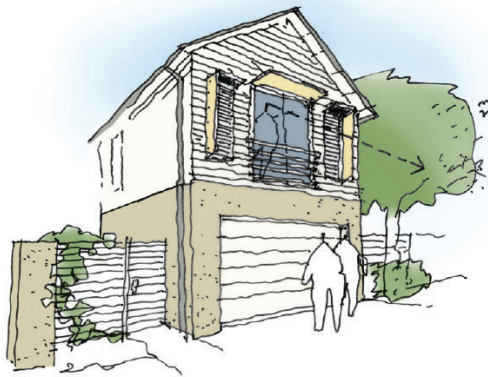


Figure 7: Fonzie Flat Studio above a double garage  
Source: LFA

### Design Requirements

- A maximum of 20% of garages in the Precinct may have studios above the garage. Each DA is to demonstrate how the 20% is being achieved across Precinct H.
- Detached Studios/Fonzie Flats can be located over a double garage. Their location throughout Precinct H will be appropriately distributed to ensure good passive surveillance over the entire secondary street all throughout the precincts.
- Detached Studios/Fonzie flats are permitted to be zero lot lined where garages are the same.
- Detached Studios/Fonzie Flats must be:
  - a. established in conjunction with a dwelling house, and
  - b. on the same lot of land as the dwelling house,
  - c. separate from the dwelling house.
  - d. located above garage
  - e. limited to 1 bedroom
- Detached Studios on the same title as the primary dwelling house will utilise the principal dwelling parking (2 spaces) and any separately titled studios (secondary dwelling) will have a separate parking space in addition to the primary dwelling parking. Separate title is not permitted for detached studios which do not have their own car space independent of the main dwelling.

## Sloping Sites

Development on sloping land should be designed with appropriate regard to the topography. Excavation and basements should be minimised and split levels should be considered as an appropriate design response to reduce the overall impact upon the land.

### Objectives

- Building designs must respond to the topography of the site and excavation / retention should be minimised.

### Design Requirements

- Maximum 1.5m cut and fill.
- Retaining walls forward of dwellings to be masonry and should complement the building design.
- Terracing of retaining walls and incorporation of landscape screening is encouraged.
- Retaining walls on street boundaries must complement associated street boundary fencing.
- Dwelling designs are to ensure reasonable visual privacy to the adjoining dwellings.
- Retaining walls in the rear garden should be at least 3m from the rear of the house to allow for a level connection.
- For front to rear slopes, step the buildings down the slope.
- For rear to front slopes, consider locating carparking in basements to minimise excavation. These may be half-in/half-out of ground.
- For cross slopes, a mid step in the floor plan can avoid excessive retaining walls on lot boundaries

## Medium density adjoining public open space

Where siding or backing onto public open space/pedestrian links, medium density/medium density site design must facilitate passive surveillance over the public open space via:

- Top floor balcony design
- Private open space design/landscaping

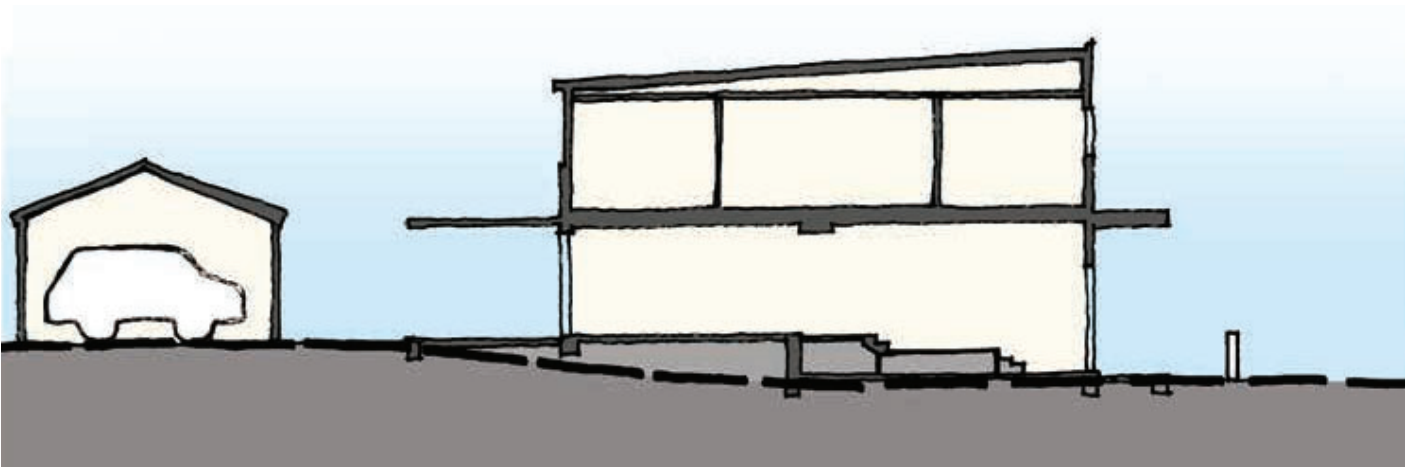


Figure 8: Development on sloping land.  
Source: Cox

### 3.4 Mixed Use Site

Precinct H provides for a range of dwelling typologies that support a mix of households, adaptability, a diversity of built form and character, and offer more affordable housing products.

A primarily apartment typology is proposed as a way to meet the density and yield requirements of the Part 3A Concept Approval, as modified.

The Mixed Use Site is located along the frontage of Precinct H adjacent to the Breakwall subject to compliance with the Concept Plan Approval, as modified. The compatibility of the scale of the typology matches development across the Harbour and offers more compact and sustainable living options in close proximity to amenity and the Waterfront Shell Cove Town Centre.

The overarching control framework for apartments within Precinct H (Medium Density) is SEPP 65 - Design Quality of Residential Flat Development and the NSW Apartment Design Guide.

The siting of the apartment buildings responds to the topography and natural landscape setting, maximising the view amenity to Shell Cove Harbour and placing density adjacent to amenity. Apartments are intended to be designed utilizing similar materials and expressions as other forms of medium density housing in the Precinct to create a cohesive, yet diverse streetscape and landscape character expressed at different densities and yields.

- To promote tourism, Short Term Rental Accommodation (STRA) may be developed in the mixed use site. Under State Environmental Planning Policy (Housing) STRA can be exempt development.
- Refer to Shellharbour Development Control Plan to ensure fire hydrants and other plant equipment are integrated with the development's design.

#### Key Controls

Mixed use development means a building or place comprising 2 or more different land uses.

The modified concept approval requires a commercial and mixed use land use outcome for the mixed use site at the southern end of Precinct H.

Land uses within the Precinct H Mixed Use Site include:

- Dining, restaurants, cafes, retail premises at ground level
- Apartments, short term rental accommodation and serviced apartments

Apartment typologies are to be designed to ensure that they meet the aims, objectives and principles of SEPP 65 Design Quality of Residential Flat Development and the NSW Apartment Design Guide. Proposed variations to the design criteria must be supported by information at the development application stage that demonstrates how the aims, objectives and principles of SEPP 65 and the NSW ADG are achieved.

Refer to the Shellharbour Development Control Plan for development provisions not covered in these design guidelines.

Car parking – Precinct H is not located in a nominated area for calculating car parking under the NSW Apartment Design Guide. Therefore, the Council's DCP rates apply to any development typologies within the Mixed Use Site. Any variation to the Council's DCP parking requirements is to be supported by a Traffic and parking Study. This would need to include a long term/broad area demand and supply assessment.

#### Objectives

- To minimise land use conflicts with nearby residential development
- To promote uses that attract pedestrian traffic along ground floor street frontages
- Design to be of high quality visual presentation.

## Design Requirements

### Activity, layout & landscaping

- Active frontages, especially restaurants/cafes will be encouraged on all frontages.
- Active frontages must be consistent with the written Shellharbour Local Environmental Plan (LEP) 2013 provisions for active street frontages, which includes comprising business or retail development as defined in LEP 2013.
- Publicly accessible pedestrian paths should be provided around the site's perimeter within the site or via street footpaths. .
- Appropriate ground floor setbacks to be provided to facilitate outdoor restaurants/cafes within private property
- Landscaping will be low maintenance and have regard to Crime Prevention Through Environmental Design Principles – in particular it must be visually permeable, not provide concealment opportunities and pedestrian routes must be conducive to passive surveillance.
- Landscaping will include legible pedestrian access between public pathways/streets and any future mixed use building.

### Visual

- Roof form and all facades must have high quality architectural presentation
- Architectural presentation to complement the site's coastal setting
- Colours, tones, materials can take cues from Appendix B – Colour Palette. Other examples of modern coastal design considerations can draw from similar developments within Shell Cove and other high quality coastal examples.
- Heights of any podium to be minimised
- Where a podium 1 metre or higher cannot be avoided, the podium face must have a design treatment such as:
  - public art.
  - landscaping such as vines, within private land'.
  - varied colours and materials.
  - patterned finish.

### Servicing

- Vehicular servicing to the site will minimise impact on residential amenity and pedestrian circulation.
- Street design will have regard for servicing needs of commercial development.

### Parking

- On-site parking to be provided as per the Shellharbour Development Control Plan



## 4.0 Building Design & Landscape Character

### 4.1 Building Facades, Street Frontage & Character

Precinct H will be defined by a built form that references the natural coastal setting that has memorable streetscapes and incorporates attractive facades, reflective of the natural materials and characteristics of the Shell Cove Precinct. It will have a high quality, contemporary architectural composition defined by its landscaping reminiscent of the NSW South Coast.

The building facades and character of buildings at The Waterfront Shell Cove should reflect the coastal location and articulate the sustainable focus of the community.

Facades should respond to the Shell Cove microclimate, explore different elevation treatments related to orientation, incorporate durable materials and finishes suitable for coastal conditions and display a variety of external shading components.

The design quality of facades will also be influenced by the articulation of facade elements, innovation in environmental sustainability, proportion, transparency, the interplay of light and shade, materiality and colour.

Forms of articulation include blade walls, steel and natural timber posts, entries, balconies, verandahs, pergolas, screens, awnings, feature walls and a combination of external materials.

#### Design requirements

- All buildings are to meaningfully contribute to the character of The Waterfront Shell Cove through quality design composition of facades.
- Facades should provide a richness of detail and design interest especially at visually prominent locations.
- Designs should demonstrate a clear relationship between the collection of building forms and the individual facade and elements.



Figure 9: Streetscape character of Precinct H  
Source: COX Architects

## Coastal Character

The design of dwellings should contribute to the contemporary coastal setting encouraged at The Waterfront, Shell Cove.

### Design requirements

- Maximising indoor/outdoor relationships that create a sense of 'openness' and 'transparency' with opportunities for 'outdoor' rooms, verandahs, balconies and porches.
- Use of materials, colours and textures that reflect the natural coastal landscape.
- Incorporation of landscaping as an element that links new development to the existing coastal setting.

## External Materials

Building facades of predominately lightweight materials are encouraged to reinforce the coastal character of the community.

### Design requirements

- The creative use of contrasting/ complementary lightweight materials is encouraged particularly to upper building levels. Materials can include timber or reconstructed weatherboards, plywood, compressed fibre cement products and metal cladding.
- A mix of external materials is required.
- At least two complementary materials or finishes should be used for facade articulation.
- All materials and finishes to resist coastal elements and be easily maintained.
- Refer to Section 4.5 and Appendix B for the preferred external materials palette.



Figure 10: Example of external building materials to be used in Precinct H  
Source: Fraser's Property

## Verandahs, Balconies, Balustrades

Oversized and generous verandahs, porches and balconies are encouraged to take advantage of the favourable Shell Cove climate and opportunities for transitional indoor/outdoor spaces.

Balconies, verandahs and porches can be incorporated within the articulation zone of 2m within the front setback.

### Design requirements

- Balconies and verandahs to be a minimum depth of 1.5m.
- Doors and windows should generally be more than 50% of the balcony or verandah width to maximise indoor/outdoor relationships.
- Detailing of balconies, balustrades and verandahs should be generally open in style and reflect a coastal character using vertical timber battens, steel, mullion-less clear or opaque glass or a combination.
- Design of balconies, balustrades and verandahs are to be integrated and complement the overall design.

## Dwelling Entry

Dwelling entries should meaningfully engage with the street and integrate well in the design of the building. Entrances contribute to the character and legibility of a street and the overall facade composition.

They should provide for weather protection and equitable access.

Where possible, provide safe, continuous, step free pathways from the street entrance and/or the parking area to the dwelling entrance.

### Design requirements

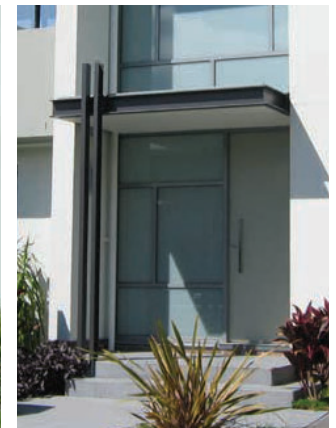
- The design of the entrance should provide interesting detail and contribute to the articulation of the building.
- A front verandah, porch or covered area (by way of an awning or similar) should be provided at, or over, the dwelling entrance to provide weather protection.
- The front door opening should be a clear 850mm minimum width to accommodate wheelchair use.
- Where private open space is located within the front building setback, for privacy and security, the private open space must be physically separated from any pedestrian property entrance/pathway to the dwelling entrance. This can be achieved with a lockable and secure front gate with intercom or structural elements including landscaping or fencing.



Overhanging verandahs



Covered alfrescos



Weather protection to entries



## 4.2 Garages and Driveways

Garages for medium density housing are located at the front and rear of dwellings across the Precinct. Garages and driveways should be designed to integrate well into the street and not dominate its character.

Variation in garage design, setbacks behind the front building line and articulation zones that allow for modulation and opportunities for landscaping, will serve to provide visual interest in the street and reduce the prominence of the garage facade.

Some rear double garages may have studio dwellings above (i.e. Fonzie flats) and should include small Juliet balconies and/or windows overlooking the laneway or secondary street for casual surveillance opportunities.

### Objectives

- Detached garages should match the main dwelling roof form and materials.
- Driveways should be integrated with the design of the front landscape area and complement the building design.
- Provide for sight distance safety.

### Design Requirements

- The maximum garage opening is to be no greater than 6m (double garage).
- Where garages are located to the primary street, they are to be setback a minimum of 0.5m behind the main building facade.
- Where lots have laneway access, vehicle access and parking should be from the laneway.
- For corner lots, vehicle access and parking is preferred from the secondary street or the rear.
- Garages in laneways must be set back a minimum of 0.5m from the rear property boundary. Studios or balconies above can be to the rear property line (subject to compliance with Table 2).
- Structures adjacent to the rear lane are not to impede the operation of waste collection vehicles.
- Any space between the lane and garage is to be paved, in coloured or exposed aggregate concrete.
- Minimum dimensions for car parking spaces are to comply with Australian Standards (AS/NZ 2890.1:2004 Parking Facilities - Off Street Parking).

### Treatment and Screening

- Garages are to be constructed in materials and finishes to match or integrate with the main dwelling.
- Garage doors are to be of contemporary design.
- Segmented door systems including panel lift and sliding doors are preferred with long horizontal paneling.
- Vertical roller doors are not permitted.

### Driveways

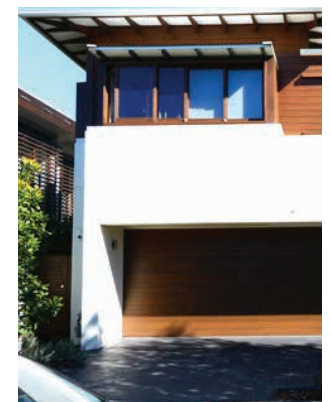
- Driveways and paved areas should be minimised.
- Hard surface, double driveway widths should be limited and only behind the property boundary if necessary.
- Uncoloured plain concrete and bitumen should be avoided.
- There should be landscaping between the driveway and side boundary, subject to complying with sight distance safety provisions.



Landscaping on laneways



Materials that integrate



Recessed Garages



### 4.3 Roof Design

The roof is a key component of the design expression of a dwelling. Quality roof design considers the contribution of the roof to the overall performance and function of the building. A variety of simple roof forms and parapets are encouraged along the streetscape.

#### Objectives

- Roof design is to be treated as an integral part of the overall design of the dwelling.
- Articulated roof forms are encouraged to provide solutions for natural light and ventilation, summer shade and winter sun penetration to the interiors.

#### Design requirements

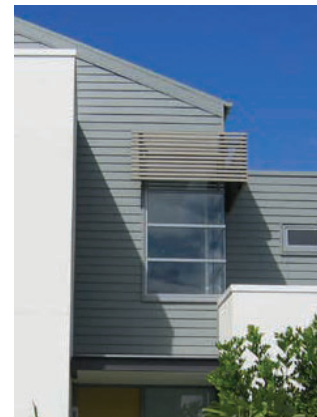
- Roofs should be simple in form with gable and hipped roofs at a minimum of 24 degrees and a maximum of 30 degrees.
- Skillion and flat roofs can be lower in pitch.
- Roof styles are to be predominantly flat, gable, hipped or skillion style. Any flat roof must be combined with other roof styles
- Roof forms are not to be excessively obtrusive or likely to cause loss of amenity to the streetscape or neighbours.
- Appropriate use of eaves, pergolas, screens, awnings, and louvres should be incorporated into the dwelling and roof design to provide protection to the north, east and west facing windows.



Example of a mix of articulation and roof styles to be used in Precinct H.  
Source: Fraser's Property.



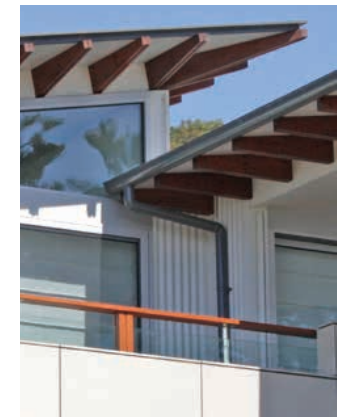
Figure 11: Mix of roof styles  
Source: Fraser's Property



Shading devices



Sun control devices



Overhanging eaves

## 4.4 Universal Design and Sustainability

### Objective

Universal design features are included in dwelling design to promote flexible housing for all community members.

### Design Requirements

25% of the medium density housing is to include the Liveable Housing Design Guideline's silver level universal design features.

These guidelines are underpinned by sustainability principles. All medium density housing is to be designed with environmental sustainability measures and comply with current BASIX and NATHERS standards.

Minimising energy consumption of households is an important contribution to reducing greenhouse emissions. Use of building materials that contribute to the building's sustainability performance should be encouraged.

### Passive Solar Design

Shell Cove experiences a warm humid summer and mild winters. The following principles should be considered when designing medium density housing:

### Design Requirements

- Orient living spaces with large openings to the north where practicable.
- Incorporate operable windows and louvres to allow for cross ventilation, natural airflow and to take advantage of breezes.
- Install insulation to walls and roofs.
- Incorporate deciduous trees for summer shade and winter sun.
- Use light coloured roofs to reflect heat.
- Incorporate sun control devices where practicable such as eaves, awning or shade devices to allow sunlight into the building during winter and to provide shade in summer.

### Sustainability

Frasers Property Australia and Shellharbour City Council are committed to creating a sustainable community at The Waterfront Shell Cove. Improving the performance of your home through environmentally sustainable design is a major focus of our sustainability approach.

This section articulates specific practices to be adopted in the design and construction of dwellings at The Waterfront Shell Cove to assist in designing sustainable homes.

All dwellings are to comply with current standards including BASIX and Nathers.

### Energy Efficiency

Minimising energy consumption of households is an important contribution to reducing greenhouse emissions that contribute to climate change.

The energy consumption of households can be reduced though the inclusion of energy efficient lighting, installation of ceiling fans, external clothes lines and skylights.

Maximising natural heating and cooling features of your site and home will reduce the need for mechanical thermal comfort control by air conditioning. It is recognised that there are some conditions when air conditioning and heating may be desirable

### Objective

- To minimise energy consumption.

### Design Requirements

- Install 5 star rated instant gas hot water systems.
- Install energy efficient light fixtures and lamps.

- Provide an external clothes drying line (appropriately sited to receive sunlight and away from public view).

For more information, go to [www.livinggreener.gov.au/](http://www.livinggreener.gov.au/).

### Water Conservation and Water Quality

### Objective

- To provide water conservation and water quality

### Design Requirements

For medium density dwellings including duplex dwellings, a rainwater tank with a minimum 2,000 litre capacity, must be provided for each dwelling. These must be installed according to relevant water quality benchmarks and regulatory requirements and be connected to all toilets, laundries and at least one outdoor tap per dwelling, for garden use.

For any building within the mixed use site, a suitably sized rainwater tank(s) must be installed according to relevant water quality benchmarks and regulatory requirements, including connection to toilets and outdoor taps used for gardens.

Details must be submitted with relevant development application(s).

## 4.5 Exterior Design Palette

The choice of external materials and colours should relate to the natural and visual character of the Shell Cove landscape.

### Objectives

The selection of external materials and finishes should be suitable for coastal conditions, for example exposure grade bricks.

The principal base colours of buildings should be natural, with stronger accent colours to be used on specific building elements such as screens, projecting blade walls, sun shading, pergolas, balconies, gutters and trim.

### Design requirements

- Where masonry is used, this is preferred on the base of the building with lightweight materials used for the upper levels.
- Composition of materials such as weatherboards, glass, masonry, timber and expressed steel elements are encouraged to add variation.



Figure 12: Example of coastal colour and material palette to be reinterpreted in the design  
Source: Frasers



## Preferred Materials & Colours

Element	Preferred Materials		Preferred Colours
Solid Walls	Masonry (lower walls) can include:	Cladding (all walls):	Refer to Colour Palette (Appendix B)
	<ul style="list-style-type: none"><li>Sandstone or stacked natural stone (not vitrified tile equivalents).</li><li>Rendered, bagged or painted blockwork or brickwork.</li><li>Face brickwork - smooth face preferred.</li><li>Highly textured bricks will not be approved.</li><li>Split face, honed or smooth face block work.</li><li>All brickwork and associated fittings are to be coastal rated.</li></ul>	<ul style="list-style-type: none"><li>Timber</li><li>Weatherboard</li><li>Plywood</li><li>Pre-finished metal</li><li>Zinc</li><li>Copper</li><li>Rendered Blue Board</li><li>Painted CFC</li></ul>	<ul style="list-style-type: none"><li>Natural colour of materials</li><li>Timbers stained (in a range similar to the colour selection)</li><li>Pre-finished sheet metal (selected Colorbond colours)</li><li>Light coastal, natural hues, cream, grey, off white, sand.</li><li>Strong accent colours for architectural interest.</li></ul> <p>Note: Alternative wall materials may be approved based on design and merit.</p>
Roofs, Gutters & Downpipes	<ul style="list-style-type: none"><li>Metal roof sheeting is preferred</li><li>Selected flat profile tiles may be approved on merit</li><li>Rainwater heads and expressed downpipes to be in folded metal</li><li>Colorbond standard profile gutters to match the roof, or stainless steel in round / half round shapes</li></ul>		<ul style="list-style-type: none"><li>Off-white and light colours preferred (to minimise heat gain)</li><li>Pre-finished metal finished (colours similar to Colour Palette)</li><li>Selected Colorbond roof colours are in light to mid tones being Surfmist, Evening Haze, Shale Grey, Dune, Windspray and Bushland.</li><li>Must be suitable for coastal conditions.</li><li>Black or highly reflective roofs are not permitted.</li></ul>
Windows	<ul style="list-style-type: none"><li>Glass / timber / painted windows</li><li>Aluminium, prefinished or natural anodised</li><li>Window reveals which add expression to the building are preferred</li></ul>		<ul style="list-style-type: none"><li>Natural colours of materials (for example, natural anodised)</li><li>Powder coat colours equal to Colour Palette colours</li></ul>
Sunshade Devices	<ul style="list-style-type: none"><li>Horizontal timber louvres / battens</li><li>Aluminium louvres</li><li>Canopy roofs compatible with main roofing</li><li>Painted CFC / Folded metal sheeting</li></ul>		<ul style="list-style-type: none"><li>Natural colours of materials</li><li>Colour as per Colour Palette</li><li>Powder coat colours equal to Colour Palette colours</li><li>Can be accent colours</li></ul>
Fencing (refer to Section 4.7 Walls & Fencing Detail)	<ul style="list-style-type: none"><li>Timber pickets / slats</li><li>Rendered / painted Masonry plinth and piers also honed or split faced</li><li>Contemporary timber pickets / slats</li><li>Painted steel pickets or slats</li></ul>		<ul style="list-style-type: none"><li>Natural colours of materials</li><li>Colour as per Colour Palette</li><li>Powder coat colours equal to Colour Palette colours</li></ul>
Garage Doors	<ul style="list-style-type: none"><li>Timber / sheet metal / translucent panels</li><li>Tilt-up panel doors preferred. Roller doors are not permitted.</li></ul>		<ul style="list-style-type: none"><li>Natural or stained timber is acceptable.</li><li>Colour as per Colour Palette.</li></ul>
Front Driveway/Pavement	<ul style="list-style-type: none"><li>Plain concrete or exposed aggregate.</li><li>Stamped, stenciled paving is not permitted.</li></ul>		<ul style="list-style-type: none"><li>Consider hard and soft driveway treatments.</li></ul>

Table 3 is a summary of the preferred materials palette for medium density development within Precinct H. This table must be read in conjunction with the detailed Materials Palette in Appendix B.



## External Materials

Building facades of predominately lightweight materials are encouraged to contribute to the coastal character of the Shell Cove Precinct.

A cohesive material palette is encouraged as an integral part of the building design and vernacular of the street.

A detailed materials palette is included in Appendix B.

### Design requirements

- The creative use of contrasting/ complementary lightweight materials is encouraged particularly to upper building levels.
- Materials can include smooth face brick, rendered masonry, timber or reconstructed weatherboards, plywood, compressed fibre cement products and metal cladding.
- A mix of external materials is required.
- At least two complementary materials or finishes should be used for facade articulation.
- Durable, high quality materials should be used to ensure the buildings withstand the effects of time, the coastal conditions and the appearance of the streetscape.





FEATURE BLOCKWORK	WINDOW/ DOOR FRAME	FEATURE FENCE	FEATURE FACE BRICKS			FEATURE TIMBER BALCONY CEILING
						
AUSTRAL GB MASONRY PEWTER	DULUX P/COAT MONUMENT SATIN	COLORBOND BASALT	BOWRAL SIMMENTAL SILVER	BOWRAL MURRY GREY	BOWRAL MURRY GREY	FEATURE TIMBER
PAINT & COLORBOND - WALL, ROOFING, TRIM						
1. TAUBMANS TAHIRA WHITE LRV 84.6	2. COLORBOND SURFMIST LRV 68	3. COLORBOND SHALE GREY LRV 50	4. BRISTOL SEA HAZE LRV 53.2	5. COLORBOND BASALT	6. COLORBOND MONUMENT LRV 8	7. TAUBMANS OILSKIN LRV 12.7
DOOR FINISH						
SELECT TIMBER VENEER CLEAR STAIN	SELECT TIMBER VENEER MEDIUM STAIN	COLORBOND SURFMIST LRV 68	COLORBOND SHALE GREY LRV 50	TAUBMANS CLASSIFIED LRV 62	TAUBMANS SEA COMMAND LRV 53.1	TAUBMANS BLUE SHAMROCK LRV 56.5
						BRISTOL EVER GOLD LRV 57.1
FEATURE POWDERCOAT - SCREEN, SUNHOOD						
KNOTWOOD BEACHWOOD	KNOTWOOD DRIFTWOOD	KNOTWOOD LIGHT OAK	KNOTWOOD BLACK ASH			
DULUX P/COAT WHITE SATIN	COLORBOND BASALT	DULUX P/COAT WEATHERED COPPER	DULUX P/COAT MONUMENT SATIN			

Figure 12 Example of external building materials to be used in Precinct H  
Source: Frasers

## 4.6 Sun Shading and Other Details

Details such as sun shading devices, balconies, downpipes and privacy screens should form an integral part of dwelling design. The following indicates the preferred detailing of these building elements.

### Sun shading, eaves and screens

#### Objectives

- Sun shading devices, screens and eaves should be designed to provide effective protection in a manner consistent with the Precinct H desired future character.

#### Design Requirements

- The use of timber battens, screens and sun shading devices is encouraged to create “outdoor rooms” for coastal living.
- Any security doors are to be simple and recessive with dark coloured mesh.
- Fly screens are to match window frame colours and be dark mesh.
- External security roller shutters to windows are not permitted.

### Gutters and Downpipes

#### Design Requirements

- Gutters and downpipes are to be integrated with the building architecture to avoid unsightly detailing and should reinforce the coastal character of Precinct H.



Sun shading devices



Overhanging eaves

## 4.7 Walls and Fences

Walls and fences define the boundary between dwellings and the public domain and contribute to the quality, character and identity of the street.

The composition of fences and walls should provide a balance between opacity and transparency, with materials and colours that convey the contemporary coastal character of The Waterfront Shell Cove.

### Objectives

- Front walls and fences are designed to promote casual surveillance and community interaction.
- Side and rear walls and fences are to maintain privacy between adjoining dwellings.
- Minimise graffiti.
- Ensure adequate sight distance safety.

### Design Requirements

The design of fences and walls is to:

- Clearly define boundaries between private and public spaces;
- Provide sight lines to the street and public domain to allow passive surveillance and increase safety;
- Provide for privacy, particularly for rear gardens and courtyards, without impacting on views, outlook, access to light and natural ventilation;
- Provide an articulated and varied interface with the street;
- Provide privacy for courtyards within the front setback;

- Provide dwelling address by integrating a letterbox and street number; and
- Incorporate landscaping where possible to soften the fence line and provide privacy where required.
- Avoid creating long stretches of blank spaces that may attract graffiti.
- Comply with site distance safety provisions.
- Ensure front door is visible.



A mix of materials



Incorporate mailboxes and landscaping



A mix of solid and transparent materials

## Front Fences

Front fences can provide for a unified streetscape and character. They define the public and private space. At The Waterfront Shell Cove, front fencing requirements vary depending on the street address.

### Design Requirements

- Front fencing is mandatory at the primary frontage for medium density dwellings.
- Front fencing is mandatory where the lot addresses entry streets or public open space.
- Front fencing is to provide permeable elements for passive surveillance to the street.
- Fencing colours and materials are to be consistent with the main dwelling colours.
- Front fences will generally be 1.2m to 1.5m in height. Where front fencing abuts private open space, a 1.8m height can be considered.
- Ensure front door is visible.
- Incorporate low key arbor feature at gate entry if appropriate.
- Pedestrian gates must be provided at primary frontages for all medium density dwellings.

## Corner Fences & Fencing to Lane ways

Corner and laneway fencing is to provide for private open space to the side or rear of dwellings, together with continuity of fencing to secondary streets and laneways.

### Design requirements

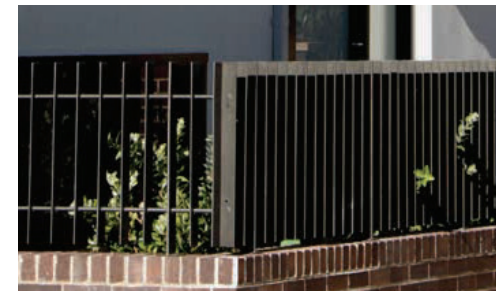
- Fences are to be maximum 1.8m high.
- Fences are to be constructed of:
  - Bagged or rendered or painted masonry walls;
  - Face brickwork or masonry (honed/ smooth block-work) that complements the main dwelling.
  - Horizontal timber battens with or without masonry piers;
- Due to their long lengths, secondary fences are to include a combination of the above.



- Masonry or solid timber fencing should be used to screen service areas otherwise a semi-transparent character can be provided by horizontal boarding or battens.
- Colours and materials of fencing is to be in accordance with Section 4.5, i.e. masonry to match the dwelling, timber stained, natural finish or painted to complement the dwelling.
- On corner lots, front fences can extend from the corner to 50% along the side frontage.
- As an alternative to the corner lot fences, the front fence or courtyard fence can continue along the secondary street frontage if preferred.



- Gates to driveways are permitted in corner lot fences where vehicle and parking access is provided from the secondary frontage at the rear of the lot.
- Provision of landscaping in laneways is encouraged to soften edges of walls and fences, which could be setback accordingly.
- An access gate can be provided to the laneway from the laneway fence.





## Side and Rear Fences

Side and rear dividing fences for typical medium density dwellings are to be:

- Maximum of 1.8m high.
- Metal Colorbond type as per the Colour Palette.
- Masonry can be used for courtyards, if desired, and must relate to the materials/colours of the dwelling.
- Metal fencing should have a simple profile without decorative trims or lattice.
- Side boundary fences are to start 1m behind the front building facade.
- Side and rear metal fencing is not permitted to any primary street, lane frontage or adjacent to public places such as public open space.
- Rear / side fencing to public open space must maintain privacy for the private open space and provide appropriate visual permeability.

## Retaining walls

For the majority of lots there is only a metre or less crossfall from front to back or side to side.

### Objectives

Retaining walls should be considered to be part of the landscape, and integrated with other fencing on boundaries.

## Design Requirements

- No higher than 1m for medium density housing sites.
- Generally be neutral elements (for example bagged brick, stone boulders or dry stone walls) and associated with planting.
- Retaining walls forward of the dwelling can be masonry and should be complementary to the dwelling design.
- Cribwall or treated pine logs are not acceptable.
- Footings, storm water and slotted drainage are to be wholly contained in the subject land. The walls may need to be set back from the boundary to accommodate drainage requirements.
- Height of retaining walls on street boundaries must be minimised.

## Special Fencing

(by Frasers Property Australia)

Fencing to mixed use site boundaries addressing the harbour perimeter/open space must be consistent with the additional mixed use site controls in Section 3.4.

Special fencing will provide for a unified streetscape along key corners and surrounding the medium density dwellings and mixed use site. The design of special fences is to be:

- Appropriate height and scale (height to be minimised).
- Provide noise protection if required.
- Comply with site distance safety provisions.
- Provide passive surveillance via visual permeability where appropriate.
- Provide privacy to private open space where appropriate.
- Consistent with and complementary to fencing provisions in these Design Guidelines.
- Provide pedestrian gates at the primary frontage for all medium density dwellings.
- Complement open space/pedestrian links design where interfacing with open space/pedestrian links.



Figure 13 Special Fencing locations

## 4.8 Service Areas and Auxiliary Structures for Medium Density Dwellings

Elements such as aerials, solar panels, air conditioners, gas and water meters, and storage structures are to be considered as integral parts of residential design and mixed use site design.

### Aerials, Antennae and Satellite Dishes

- Where television antennae or satellite dishes are required, they are to be located at the rear of dwellings away from public view.

### Solar Water Heaters and Collectors

- Solar hot water heaters located on the roof should be screened from public view wherever possible. It is desirable that they are integrated with the slope of the roof.
- Tanks associated with solar hot water systems are not permitted on the roof.
- In the instance of north facing lots, photovoltaic panels where provided, should be integrated into roof design to minimise adverse impacts on the streetscape

### Mailboxes

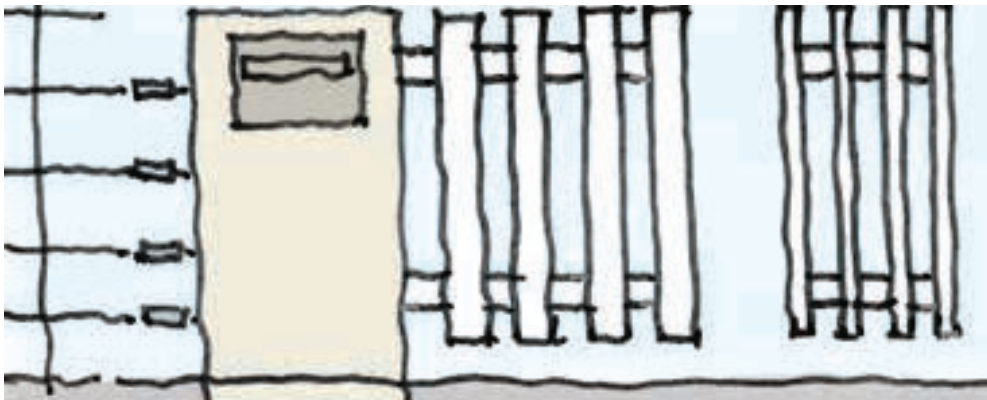
- Mailboxes are to be integrated into the front fence masonry pier or metal palisade design.

### Storage and Bins

- Storage should preferably be incorporated into the main dwelling.
- Garbage bins are to be stored on your property and out of sight/screened from public view.

### Services and Water Tanks

- Water and gas services, fuel storage tanks, gas, water and electricity meters and rainwater tanks are to be located away from public view.
- Where air conditioning is used, all equipment must be located away from public view. Any units should be mounted below 1.8m height on any external wall.
- Refuse storage areas, drying areas and clotheslines are to be located away from public view.
- Water collection is encouraged and required by BASIX. Above ground tanks that are visible from public view are to be adequately screened and should be similar in colour to the dwelling or be neutral.



Mailboxes to be integrated into front fence

## 4.9 Site Distance for Driveways and Footpaths

### Objectives

- Provide good visibility for both pedestrians and drivers in vicinity of the junction between the driveway/ garage and the footpath.
- Enable drivers/vehicles entering or exiting the property to see and be seen and heard.

### Footpaths

- Footpaths/verges in Precinct H are generally 4 metres wide with a 1.2m paved path setback .6m from the property boundary.
- Laneways generally do not have a formal footpath and will be landscaped accordingly.

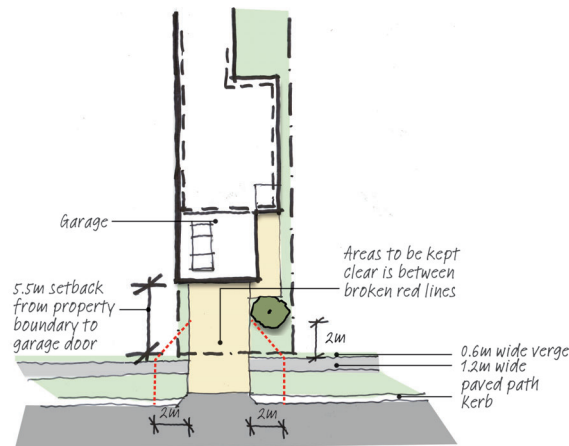


Figure 14: Primary Street

### Design requirements

The objectives can be achieved by ensuring structures/landscaping within the property, structures/landscaping on the footpath and boundary fencing/walls/gates, do not interfere with a clear line of sight for drivers/ vehicles entering or leaving a garage or driveway.

In Precinct H Medium Density Housing, garage doors are generally setback from the footpath as follows:

- 5.5m to primary frontages
- 2m to secondary frontages
- 0.5m to laneways as secondary frontages

An area of land as shown on the figures below is free of any structures, including fencing/walls/gates and landscaping.

For rear loaded laneways, 2 metres either side of the garage door, on the road reserve area and garage setback area within the property, will only have landscaping/ structures low enough to not impede driver/ pedestrian visibility.

With any inconsistency between this section and other provisions on walls and fences, this section will apply.

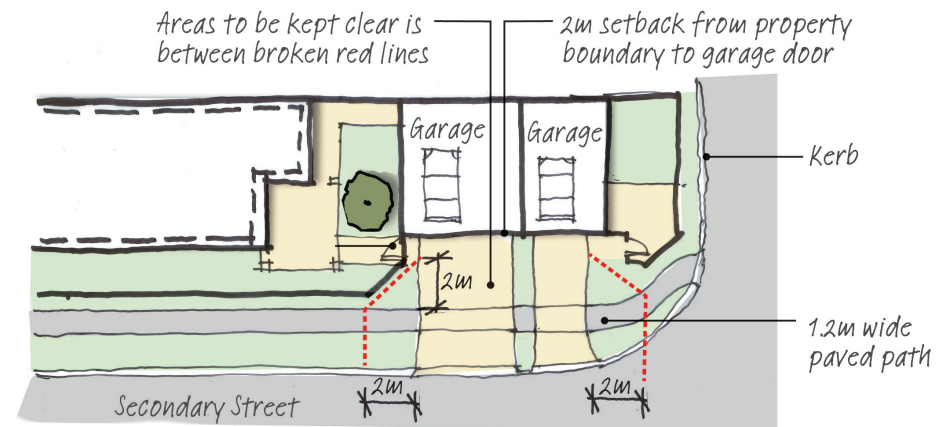


Figure 15: Secondary Street



## 5.0 Landscape Character

### 5.1 Landscaping

The landscaping contributes to the quality of the street, unifies the character and integrates the built form with the surrounding coastal environment. It also provides for shade in the summer and some forms promote sun during winter. Innovative low water, native, coastal gardens are encouraged.

A Landscape Plan is required by Shellharbour City Council as part of the DA application. A Landscaping Palette is provided in Appendix C which details preferred species and plantings for front and rear gardens. These have been informed by Council's preferred species for planting.

- Landscaping should be in accordance with the Landscaping Palette included at Appendix C.
- Plants to be selected based on the size and orientation of the garden areas with native species to be used where appropriate.
- Landscape treatments should flow from internal spaces of the home with connection to front access points from the street.
- Trees are to be planted in an edged garden bed and not directly within the turf area. Avoid planting trees close to dwellings, hard paved areas or over underground pipes.
- Table 2 provides for minimum private open space provisions and solar access requirements.
- Deciduous trees should be planted to the north, north-west and western elevations to shade the dwelling and garden from the summer afternoon sun, whilst allowing desirable winter sunlight through.

## 5.2 Front Landscaping

Landscaping of front gardens is to be completed within practical completion of the dwelling. Before, during and after construction, the property is required to be kept clear of excessive weeds, rubbish and maintained to an acceptable standard.

### Design Requirements

- All front garden areas must be properly landscaped with a combination of shrubs, grasses, trees and turf.
- A garden bed with a consistent shrub species shall be planted across the front boundary, behind front fencing to form a uniform finish to the street.
- Turf should only be used where enough space is provided between the front hedge and the dwelling and where maintenance access is sufficient.

- Plants to be selected based on the size and orientation of the garden areas with native species to be used where appropriate.
- Landscape treatments should flow from internal spaces of the home with connection to front access points from the street.
- A minimum of one small tree shall be planted in the front yard of each lot, where suitable garden space of 1m x 1m is available. Each tree is to have a minimum pot size of 75L.



Figure 16: Landscaping palette and species to be used in Precinct H  
Source: Frasers Property

### 5.3 Rear Landscaping

- Hardscapes should be provided where appropriate for outdoor living opportunities and should generally be located within the private open space and to the side of the home where required.
- Plants to be selected based on the size and orientation of the garden areas with native species to be used where appropriate.
- The placement of plants should be used to provide screening and privacy.
- Rear landscaping should be a combination of turf, screening shrubs and trees to the rear of the garden, with paved entertaining areas close to the dwelling.
- Deciduous trees should be planted to the north, north-west and western elevations to shade the dwelling and garden from the summer afternoon sun, whilst allowing desirable winter sunlight through.

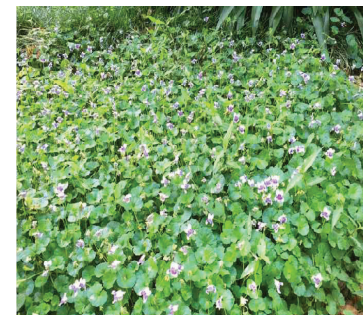
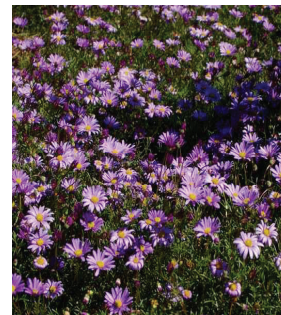


Figure 17: Landscaping species and palette to be used in Precinct H  
Source: Fraser's Property



## Appendix A - Glossary

The following definitions apply to the terms used within these Design Guidelines:

**Ancillary structures** are external building attachments, such as satellite dishes, rainwater tanks, air conditioning systems, aerials, clothes lines and hot water storage tanks.

**Articulation zone** means an area within a lot within which building elements are or may be located. The articulation setback area from a primary road is measured horizontally from the foremost edge of the building line.

**Attached dwelling** is a dwelling built with a shared or party wall with another dwelling. Types of attached housing include duplexes and townhouses.

**Attic** means any habitable space, but not a separate dwelling, contained wholly within a roof above the ceiling line of the storey immediately below, except for minor elements such as dormer windows and the like.

**Building height** (or **height of building**),

(a) in relation to the height of a building in metres – the vertical distance from ground level (existing) to the highest point of the building, or

(b) in relation to the RL of a building – the vertical distance from the Australian Height Datum to the highest point of the building, including plant and lift overruns, but excluding

communication devices, antennae, satellite dishes, masts, flagpoles, chimneys, flues and the like.

Note-ground level (existing) means the ground level indicated on the plans approved under the relevant subdivision development approval.”

**Building line** means the line of an existing or proposed external wall or roof edge of a building (other than a wall or roof of any building element within an articulation zone), or the outside face of any existing or proposed ancillary development, closest to a boundary of a lot.

**Character** means an expression of qualities which distinguish one locality from another. The character of one place is differentiated from another by features such as shape and slope of the land; tree canopy; views; building size and style and streetscape scale.

**Detached studio** means ancillary development including a fonzie flat that is habitable and is:

- a. established in conjunction with a dwelling house, and
- b. on the same lot of land as the dwelling house, and
- c. separate from the dwelling house.
- d. located above garage
- e. limited to 1 bedroom

The definition for a ‘Detached studio’ under these Design Guidelines does not include a ‘Secondary dwelling’ as defined under the Shellharbour Local Environmental Plan 2013.

A ‘Detached studio’ does not require additional contributions in accordance with Section 7.11 of the Environmental Planning and Assessment Act 1979. However, if the proposed detached studio meets the definition of a ‘secondary dwelling’ under the Shellharbour LEP 2013, then additional Section 7.11 contributions will be payable.

Refer also to definition for ‘Secondary dwelling’ under these Design Guidelines and within the Shellharbour Local Environmental Plan 2013.

When submitting a development application, the applicant is required to confirm the applicable definition(s) under the Shellharbour LEP 2013 to allow Council to calculate the required developer contributions.

**Duplex** means two dwellings with a shared or party wall.

**Dwelling** means a building containing one dwelling, an attached dwelling or a semi-detached dwelling, but does not include any part of the building that is ancillary development or exempt development.

**Garden Studio** is an attached duplex located on a corner lot with a splay.

**Ground level** is the level of the land surface before development is carried out, measured in Australian Height Datum (AHD).

**Habitable room** is a room, other than a bathroom, laundry, garage, water closet or the like, that is designed, constructed or adapted for the activities normally associated with domestic living.

**Lightweight external building materials** are cladding material and small section supporting posts and frames which give the external appearance of the relaxed character of the Shellharbour area (e.g. weatherboard, timber, corrugated iron, plywood etc.)

**Living area** is a term describing internal space used for domestic activities (e.g. lounge, family and dining rooms), excluding non-habitable rooms and bedrooms.

**Medium Density** refers to all other medium density building typologies that are not governed by the State Environmental Planning Policy No 65, and Apartment Design Guide.

**Mixed Use Development** means a building or place comprising 2 or more different land uses.

**Primary street** means the street to which the front of a dwelling house, or a main building, on a lot faces or is proposed to face.



## Appendix A - Glossary

**Private Open Space** is defined as outdoor space located at ground level, or on a structure that is within private ownership and provided for the recreational use of residents of the associated dwelling. This includes circulation space and may contain minor encroachments such as pergola posts and steps.

**Public view** means views from the public domain, such as roads, pathways and walking tracks, foreshore reserves, open space corridors and parks.

**Secondary dwelling** is defined as per the *Shellharbour Local Environmental Plan 2013*.

A 'Secondary dwelling' requires additional contributions in accordance with Section 7.11 of the *Environmental Planning and Assessment Act 1979*.

Refer to the definition for 'Secondary dwelling' under the *Shellharbour Local Environmental Plan 2013*.

**Secondary street** means, in the case of a corner lot that has boundaries with adjacent streets, the road that is not the primary street.

In the case of a lot with frontages at both ends, it is the road that is not the primary street.

**Setback** means the horizontal distance between the relevant boundary of the lot and the building line.

**Setback area** means the area between the building line and the relevant boundary of the lot.

**Site analysis** is a process of identifying and analysing key features of the site and immediate surroundings to assist in understanding how future homes will relate to your lot; neighbouring lots and The Waterfront Shell Cove neighbourhood.

**Small Lot Detached Dwelling** means a dwelling that is not attached to any other dwelling on a lot with a frontage of 13.5m or less that forms part of an integrated development application.






**Terrace** is a dwelling that is attached on one or more sides in a group of more than two dwellings with vehicular access from the rear.

**Serviced apartment** means a building (or part of a building) providing self-contained accommodation to tourists or visitors on a commercial basis and that is regularly serviced or cleaned by the owner or manager of the building or part of the building or the owner's or manager's agents.

**Townhouse** is a dwelling that is attached on one or more sides in a group of more than two dwellings with vehicular access at the front of the dwelling.

**Zero Lot Dwelling** is a dwelling that has an exterior wall on one of its side boundaries but is not attached to any other dwelling.

## Appendix B - Colour Palette

<div>FEATURE BLOCKWORK</div> <div></div> <div>AUSTRAL GB MASONRY PEWTER</div>	<div>WINDOW/ DOOR FRAME</div> <div></div> <div>DULUX P/COAT MONUMENT SATIN</div>	<div>FEATURE FENCE</div> <div><div>COLORBOND BASALT</div><div>STANDARD FENCE</div></div> <div>COLORBOND WOODLAND GREY</div>	<div>FEATURE FACE BRICKS</div> <div></div> <div>BOWRAL SIMMENTAL SILVER</div> <div>BOWRAL MURRY GREY</div>	<div>FEATURE TIMBER BALCONY CEILING</div> <div></div> <div>FEATURE TIMBER</div>			
PAINT & COLORBOND - WALL, ROOFING, TRIM							
<div>1. TAUBMANS TAHIRA WHITE LRV 84.6</div>	<div>2. COLORBOND SURFMIST LRV 68</div>	<div>3. COLORBOND SHALE GREY LRV 50</div>	<div>4. BRISTOL SEA HAZE LRV 53.2</div>	<div>5. COLORBOND BASALT</div>	<div>6. COLORBOND MONUMENT LRV 8</div>	<div>7. TAUBMANS OILSKIN LRV 12.7</div>	
DOOR FINISH							
<div></div> <div>SELECT TIMBER VENEER CLEAR STAIN</div>	<div></div> <div>SELECT TIMBER VENEER MEDIUM STAIN</div>	<div></div> <div>COLORBOND SURFMIST LRV 68</div>	<div></div> <div>COLORBOND SHALE GREY LRV 50</div>	<div></div> <div>TAUBMANS CLASSIFIED LRV 62</div>	<div></div> <div>TAUBMANS SEA COMMAND LRV 53.1</div>	<div></div> <div>TAUBMANS BLUE SHAMROCK LRV 56.5</div>	<div></div> <div>BRISTOL EVER GOLD LRV 57.1</div>
FEATURE POWDERCOAT - SCREEN, SUNHOOD							
<div></div> <div>KNOTWOOD BEACHWOOD</div>	<div></div> <div>KNOTWOOD DRIFTWOOD</div>	<div></div> <div>KNOTWOOD LIGHT OAK</div>	<div></div> <div>KNOTWOOD BLACK ASH</div>				
<div></div> <div>DULUX P/COAT WHITE SATIN</div>	<div></div> <div>COLORBOND BASALT</div>	<div></div> <div>DULUX P/COAT WEATHERED COPPER</div>	<div></div> <div>DULUX P/COAT MONUMENT SATIN</div>				

# Appendix C - Planting Palettes

**INFORMAL**  
Contrasts of grey and green foliage with large leaved accents.

PLANT PALETTE 1				
SYMBOL	BOTANICAL NAME	COMMON NAME	QUANTITY	POT SIZE
TREES				
Eu	Elaeocarpus eumundii	Eumundi Quandong	100L	8m
Er	Elaeocarpus reticulatus 'Prima Donna'	Blueberry Ash	100L	9m
Til	Tristania laurina 'Luscious'	Luscious Water Gum	100L	12m
Pc	Pyrus calleryana	Charitidear Ornamental Pear	100L	7m
SMALL SHRUBS				
Aam	Acmena smithii 'Alyn Magic'	Alyn Magic Lilly Pilli	300mm	1m
Rop	Raphiolepis 'Oriental Pearl'	Raphiolepis	300mm	1m
Rsm	Raphiolepis 'Snow Maiden'	Raphiolepis	300mm	1m
ACCENTS/FEATURES				
Ag	Agave attenuata	Soft-leaved Agave	300mm	1m
De	Doranthus exelsa	Gymea Lily	300mm	2m
Zf	Zamia furcata	Cardboard Palm	200mm	1m
GROUND COVERS				
Con	Convolvulus creticum	Convolvulus	140mm	0.6m
Com	Convolvulus mauritanicus	Convolvulus	140mm	0.6m
Dsf	Dichondra 'Silver Falls'	Dichondra Silver Falls	140mm	0.3m
Sep	Senecio serpens	Blue Chalk Sticks	200mm	0.3m
SCREENING				
Alp	Alpinia caerulea	Native Ginger	200mm	3m
Alz	Alpinia zerumbet	Shell Ginger	200mm	2.5m
Cg	Cardyline glauca	Falcon Cord/lily	300mm	3m
Mf	Michelia figo	Port Wine Magnolia	300mm	3m
Re	Rhipsalis exelsa	Lady Palm	300mm	3m



TREES



SHRUBS



ACCENTS/FEATURES



GROUND COVERS



SCREENING

CONVOLVULUS

DICHAONDA

PROJECT	NEW RESIDENCE	
	PLANT PALETTE SCHEDULES	
	1:100 @ A3	CNPT L-01
	GC	MD 0405-17
SHELL COVE LANDSCAPE PALETTE 1		
FRASERS PTY LIMITED		



Appendix C - Planting Palettes

COLOURED ACCENTS  
Coloured accent  
plants to either the  
low or mid-layered  
plantings

PLANT PALETTE 2					
SYMBOL	BOTANICAL NAME	COMMON NAME	QUANTITY	POT SIZE	MATURE SIZE
TREES					
Hib	Hibiscus 'Hibiscus Rubra'	Red Cottonwood	100L	8m	
Mlg	Magnolia grandiflora 'Little Gem'	Little Gem Magnolia	100L	5m	
Mgk	Magnolia grandiflora 'Teddy Bear'	Magnolia	100L	5m	
Wf	Waterhousea fedorunda 'Amara'	Weeping Lily-Pilly	100L	8m	
SMALL SHRUBS					
Alr	Alternanthera 'Little Ruby'	Dwarf Alternanthera	200mm	0.4m	
Cgf	Callistemon 'Great Balls of Fire'	Bottlebrush	300mm	1.75m	
Cm	Clivia miniata	Clivia	200mm	0.5m	
De	Dorothy's excelsa	Gymea Lily	300mm	2m	
GROUND COVERS					
Aj	Anga reptans 'Callitris Giant'	Bugle Weed	140mm	0.3m	
Cgi	Casuarina glauca 'Cush II'	Prostrate Swamp Oak	140mm	0.1m	
Dij	Dorila caerulea 'Little Joss'	King Alfred Flax Lily	140mm	0.4m	
Lme	Lycopodium obscurum 'Evergreen Giant'	Giant Lycopodium	140mm	0.7m	
Tas	Trachelospermum asiaticum	Japanese Star Jasmine	140mm	Up to 6m	
Tj	Trachelospermum jasminoides	Star Jasmine	140mm	0.3m	
Tc	Tuboglia violacea 'Variegated Society Garlic'	Variegated Society Garlic	140mm	0.3m	
Vh	Viola hederaea	Native Violet	140mm	0.1m	
SCREENING					
Alp	Alphitoea caerulea	Native Ginger	200mm	3m	
Alz	Alphitoea zeumbeii	Shell Ginger	200mm	2.5m	
Cg	Cordyline glauca	Falcon Cordyline	300mm	3m	
Mf	Michelia figo	Port Wine Magnolia	300mm	3m	
Re	Rhipsalis excelsa	Lady Palm	300mm	3m	



TREES



SHRUBS

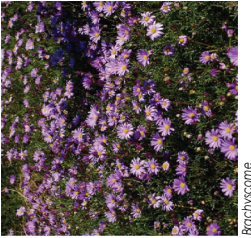


Waterhousea

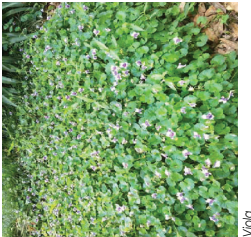
Hibiscus



ACCENTS/FEATURES



GROUND COVERS



Bachyscome

Clivia

Viola

Corporalis



Appendix C - Planting Palettes

CLASSIC TROPICAL  
Classic green foliage  
with white flowers

PLANT PALETTE 3

SYMBOL	BOTANICAL NAME	COMMON NAME	QUANTITY	POT SIZE	MATURE SIZE
TREES					
Ac	Achras zapota	Bangalow Palm	45L	45L	1.5m
Dd	Dioscorea alata	Dragon's Blood	45L	45L	5m
Dyl	Dysoxylum	Golden Cone Palm	45L	45L	8m
Pa	Plumeria	White Frangipani	100L	100L	6m
SMALL SHRUBS					
Dur	Duranta	Shorea's Mingosia A Duranta	200mm	200mm	2m
Gaf	Gardenia augusta	Rock Gardenia	300mm	300mm	0.3m
Gar	Gardenia augusta	Rock Gardenia	200mm	200mm	0.3m
Pe	Philodendron	Dwarf Philodendron	300mm	300mm	1m
ACCENTS/FEATURES					
Ac	Achras zapota	NZ Rock Lily	140mm	140mm	0.5m
Aa	Asplenium australasicum	Strat Neri Fern	200mm	200mm	0.3m
Cr	Cycas revoluta	Sago Palm, Cycad	300mm	300mm	1m
Px	Philodendron	Philodendron	300mm	300mm	0.5m
GROUND COVERS					
Bm	Baccharis	Curl Leaf Daisy	140mm	140mm	0.3m
Cgl	Carpetaria	Pig face	140mm	140mm	0.3m
Dij	Dianella	King Alfred Fox Lily	140mm	140mm	0.4m
Dsf	Dichondra	Dichondra Silver Falls	140mm	140mm	0.3m
Vh	Viburnum	Native Violet	140mm	140mm	0.1m
SCREENING					
Alp	Alphitoea	Native Ginger	200mm	200mm	3m
Alz	Alphitoea	Shell Ginger	200mm	200mm	2.3m
Cg	Cordyline	Falcon Cordyline	300mm	300mm	3m
Mf	Michelia	Port Wine Magnolia	300mm	300mm	3m
Re	Rhipsalis	Lady Palm	300mm	300mm	5m



TREES



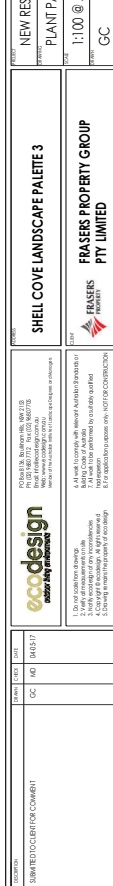
SHRUBS



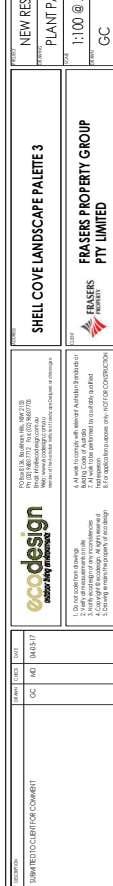
ACCENTS/FEATURES



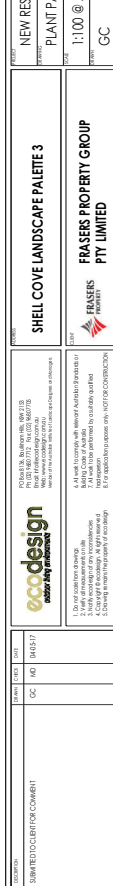
GROUND COVERS



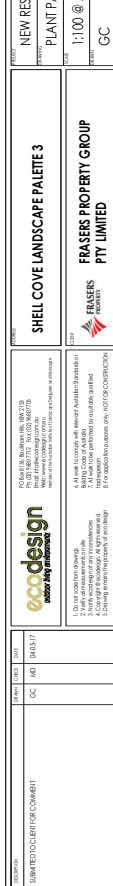
GROUND COVERS



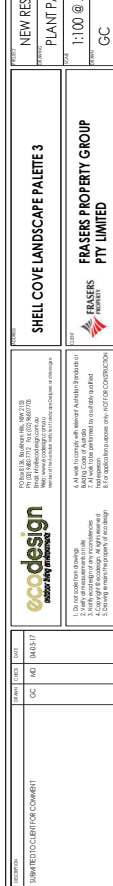
GROUND COVERS



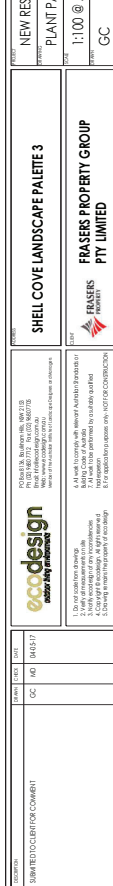
GROUND COVERS



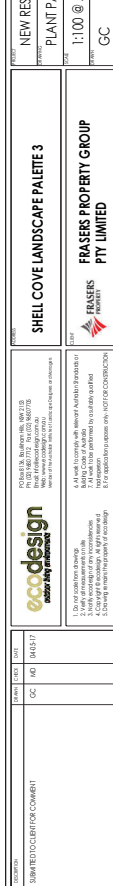
GROUND COVERS



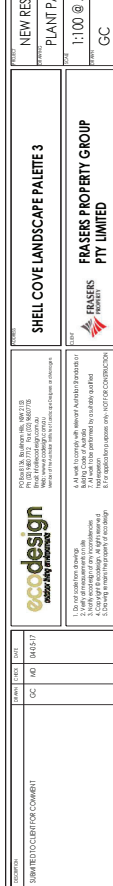
GROUND COVERS



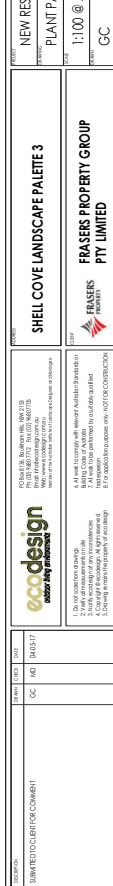
GROUND COVERS



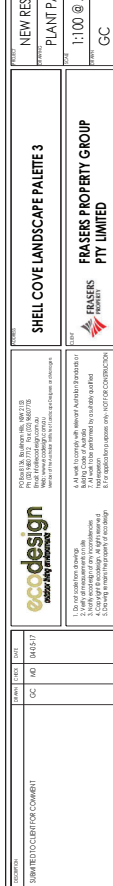
GROUND COVERS



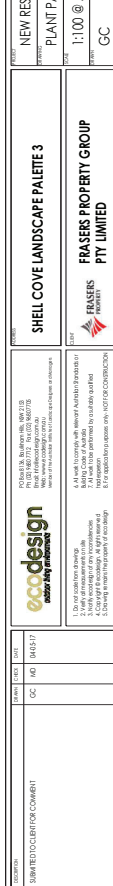
GROUND COVERS



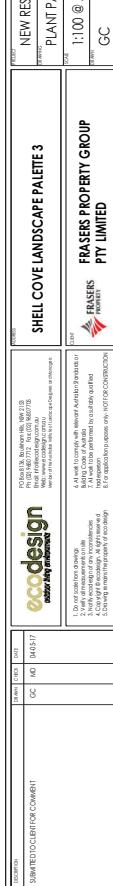
GROUND COVERS



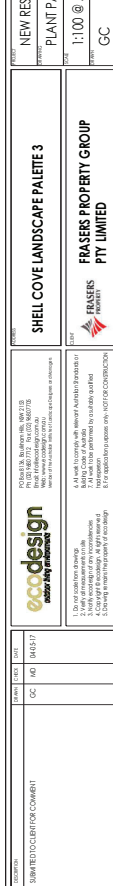
GROUND COVERS



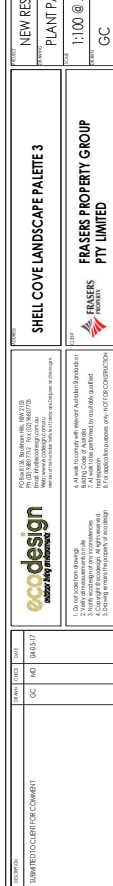
GROUND COVERS



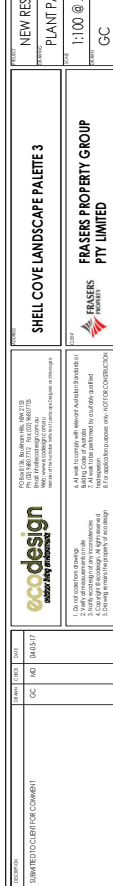
GROUND COVERS



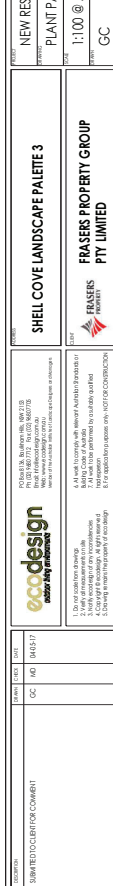
GROUND COVERS



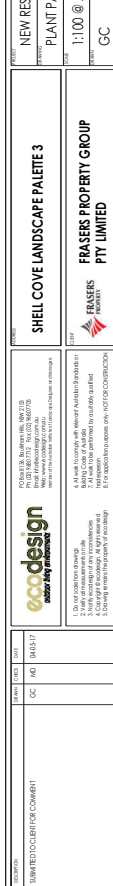
GROUND COVERS



GROUND COVERS



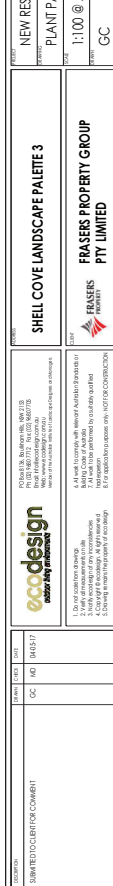
GROUND COVERS



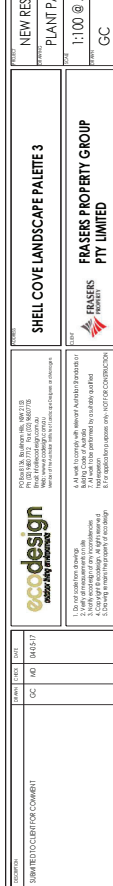
GROUND COVERS



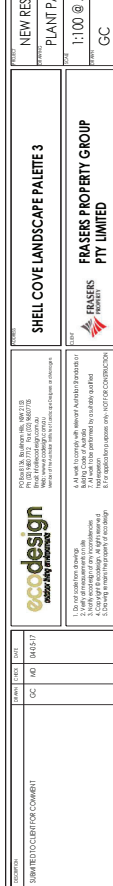
GROUND COVERS



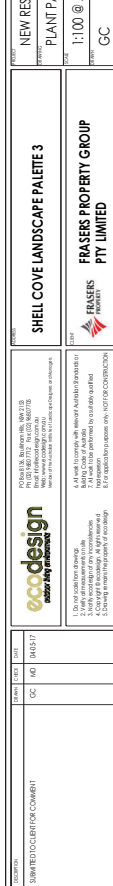
GROUND COVERS



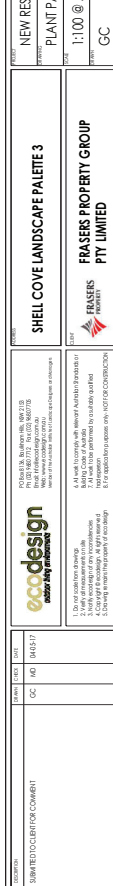
GROUND COVERS



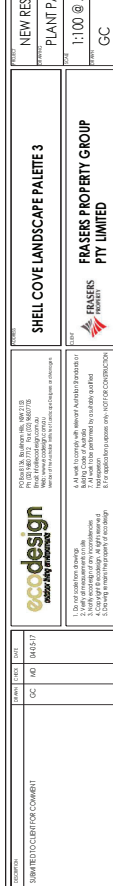
GROUND COVERS



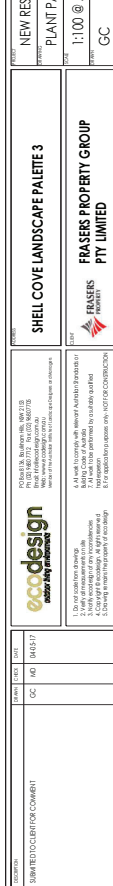
GROUND COVERS



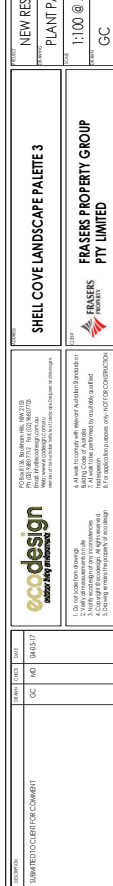
GROUND COVERS



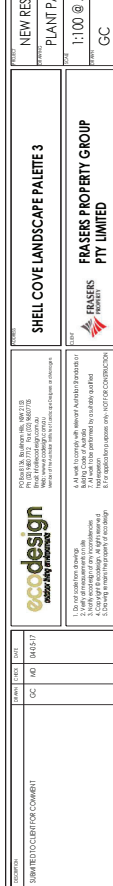
GROUND COVERS



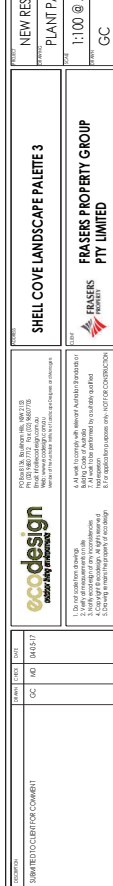
GROUND COVERS



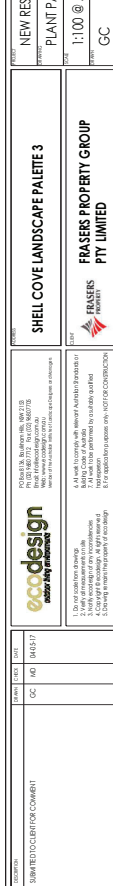
GROUND COVERS



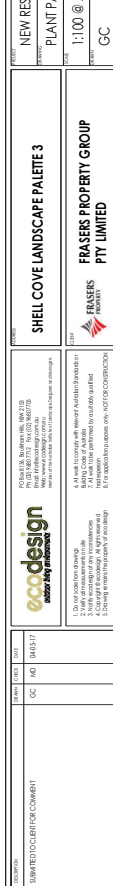
GROUND COVERS



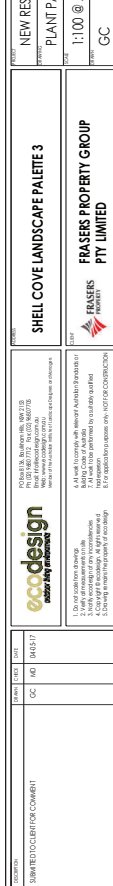
GROUND COVERS



GROUND COVERS



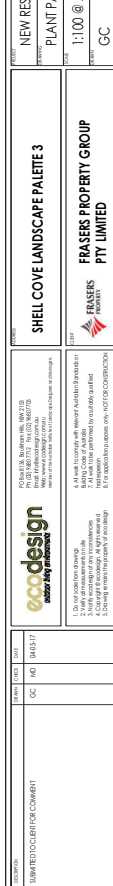
GROUND COVERS



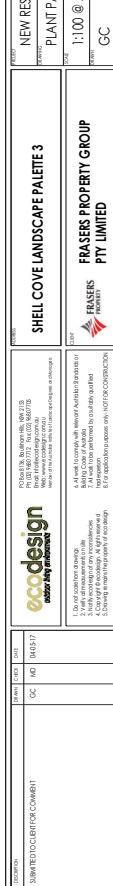
GROUND COVERS



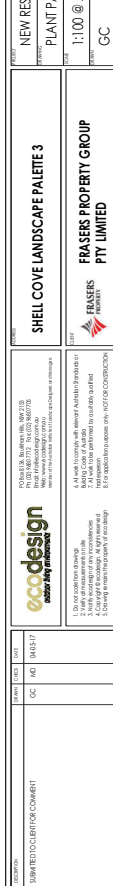
GROUND COVERS



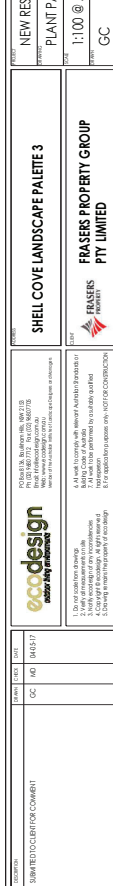
GROUND COVERS



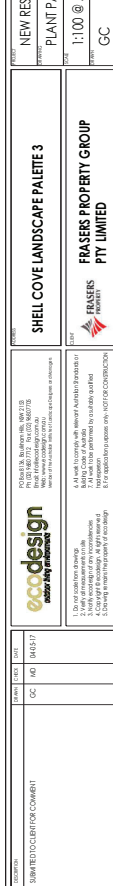
GROUND COVERS



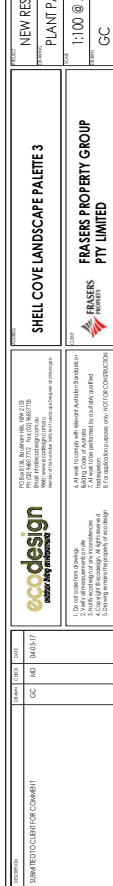
GROUND COVERS



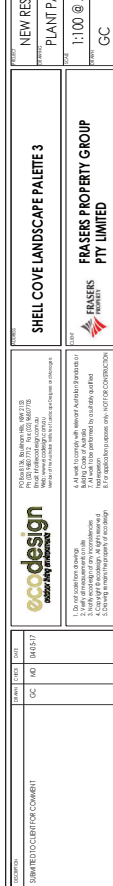
GROUND COVERS



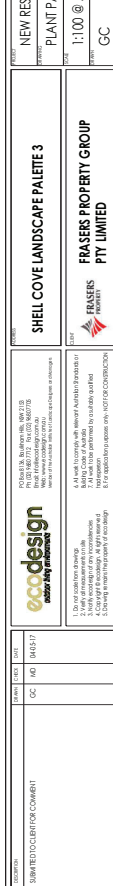
GROUND COVERS



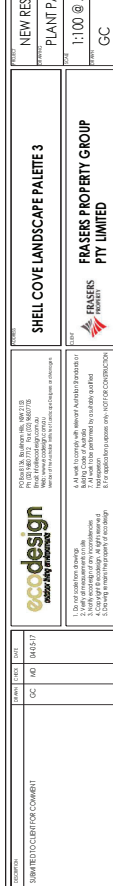
GROUND COVERS



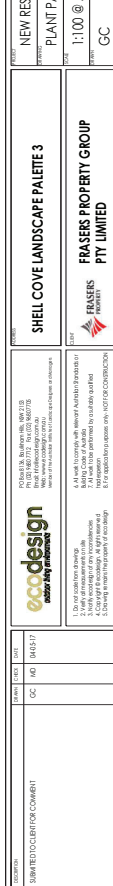
GROUND COVERS



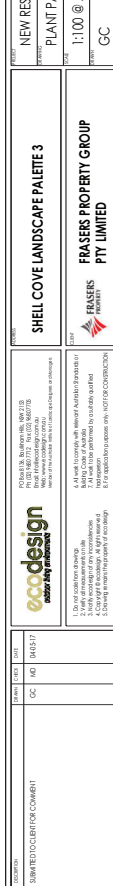
GROUND COVERS



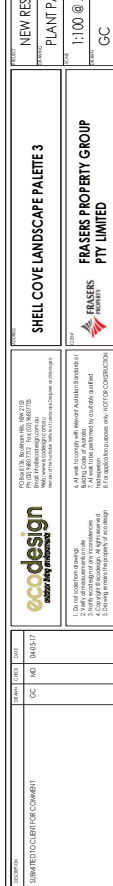
GROUND COVERS



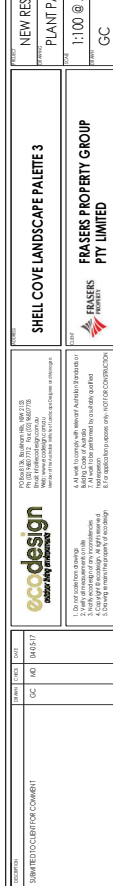
GROUND COVERS



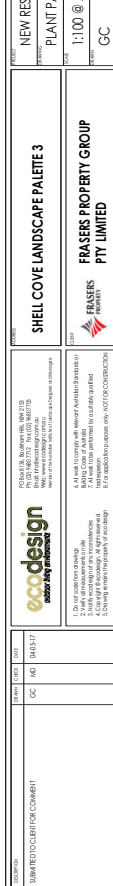
GROUND COVERS



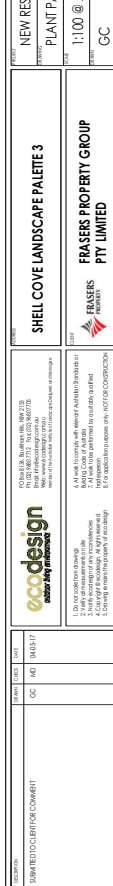
GROUND COVERS



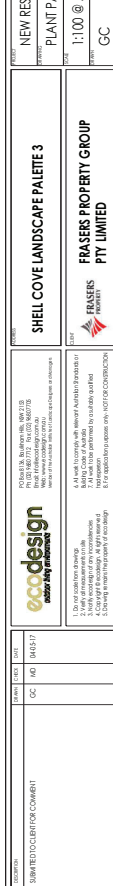
GROUND COVERS



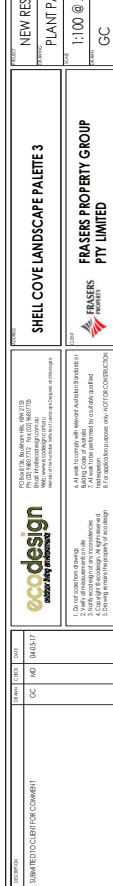
GROUND COVERS



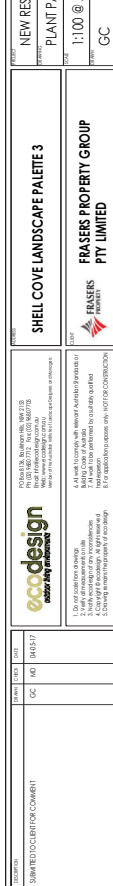
GROUND COVERS



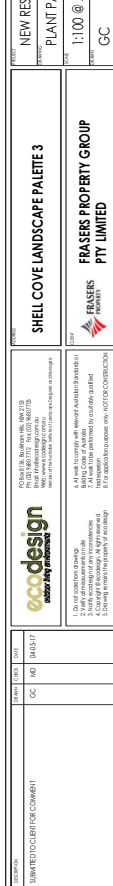
GROUND COVERS



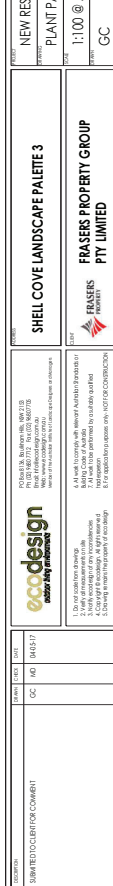
GROUND COVERS



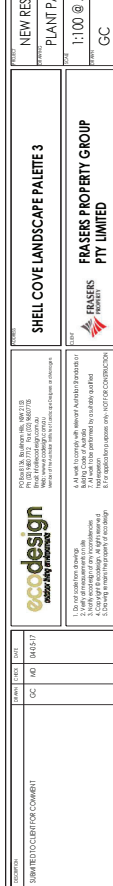
GROUND COVERS



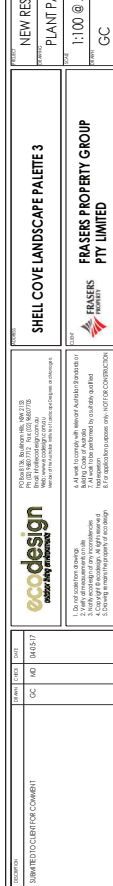
GROUND COVERS



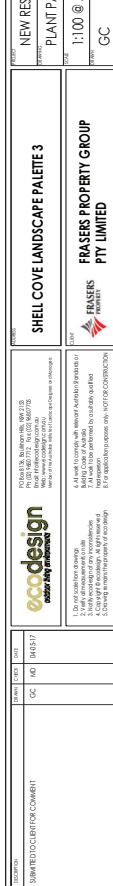
GROUND COVERS



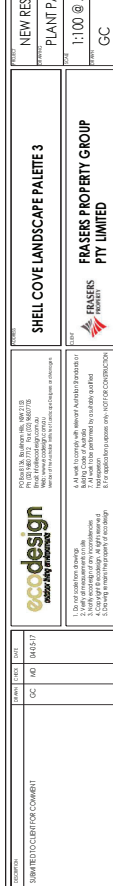
GROUND COVERS



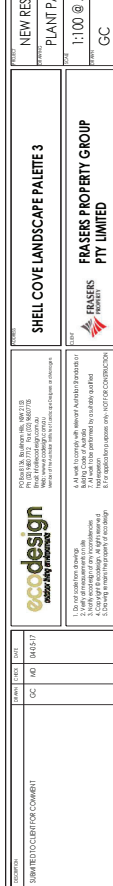
GROUND COVERS



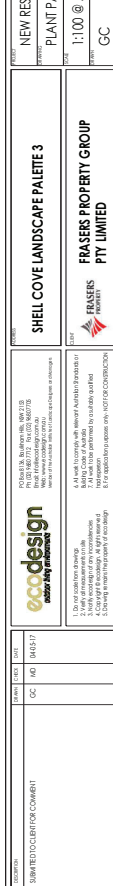
GROUND COVERS



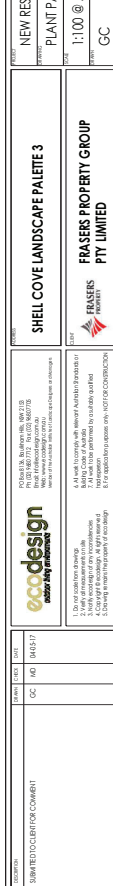
GROUND COVERS



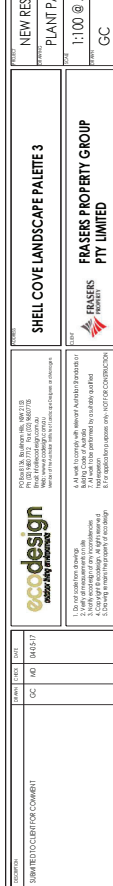
GROUND COVERS



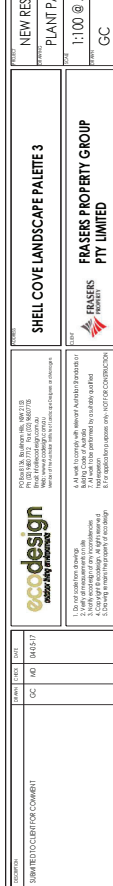
GROUND COVERS



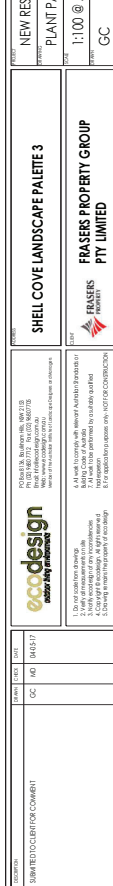
GROUND COVERS



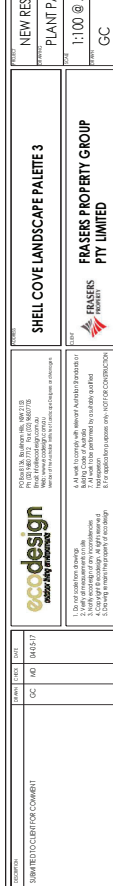
GROUND COVERS



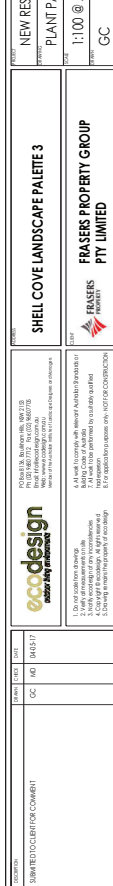
GROUND COVERS



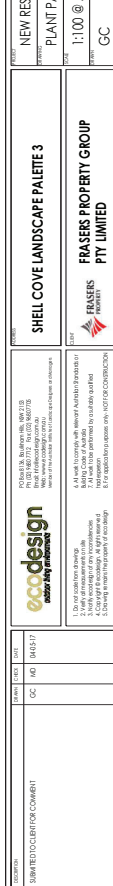
GROUND COVERS



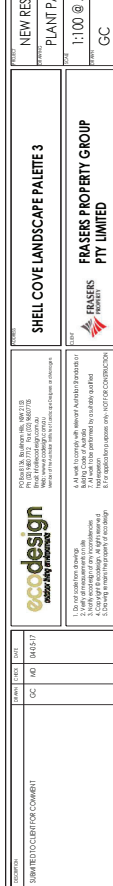
GROUND COVERS



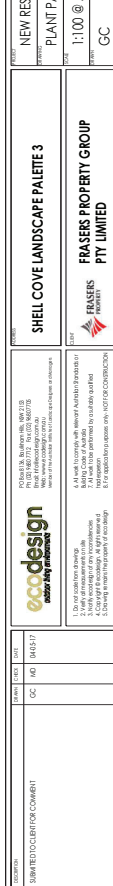
GROUND COVERS



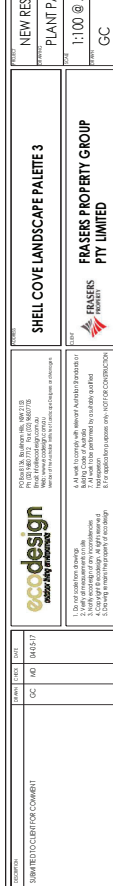
GROUND COVERS



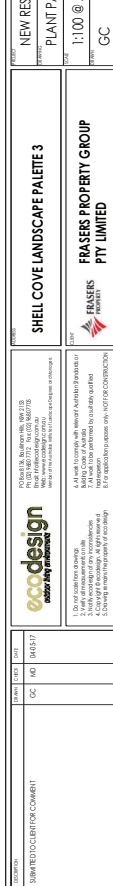
GROUND COVERS



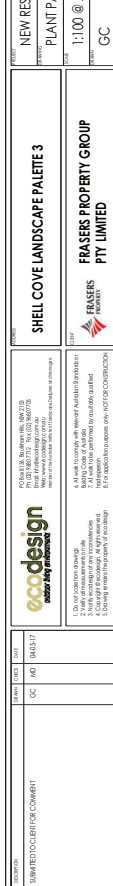
GROUND COVERS



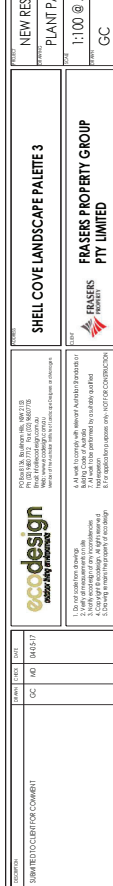
GROUND COVERS



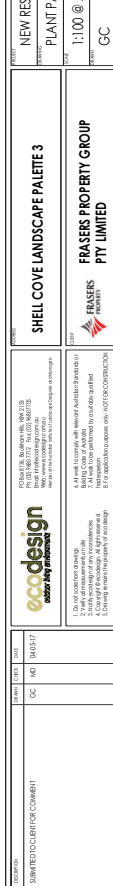
GROUND COVERS



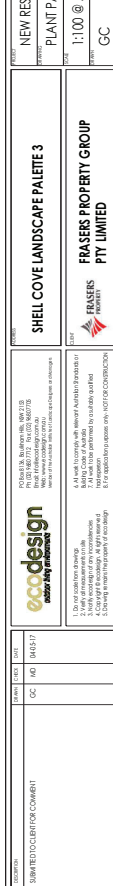
GROUND COVERS



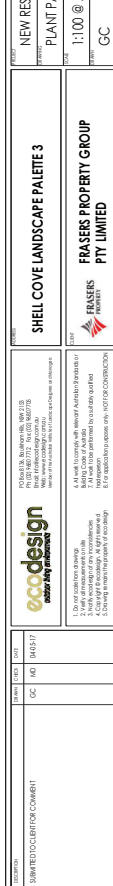
GROUND COVERS



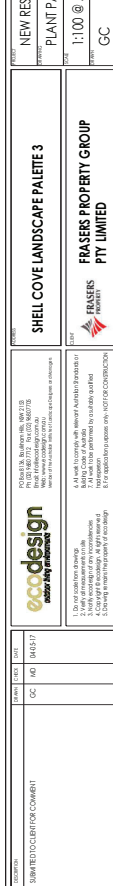
GROUND COVERS



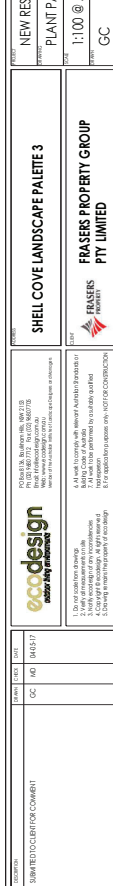
GROUND COVERS



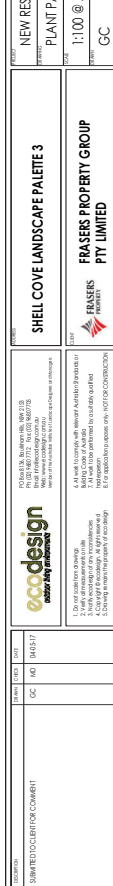
GROUND COVERS



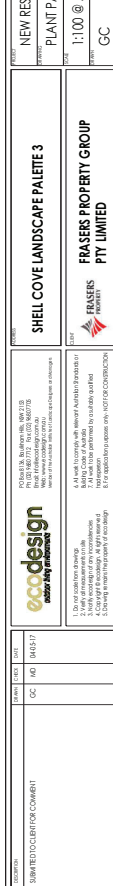
GROUND COVERS



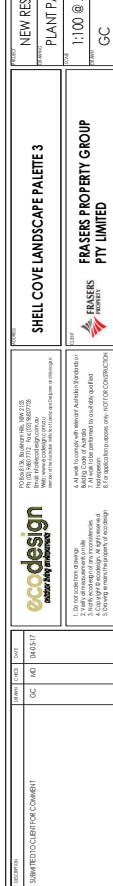
GROUND COVERS



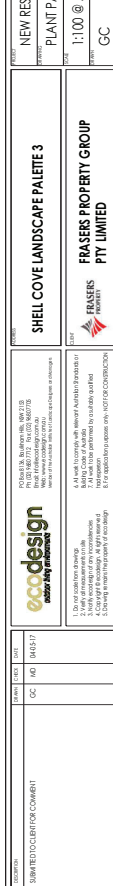
GROUND COVERS



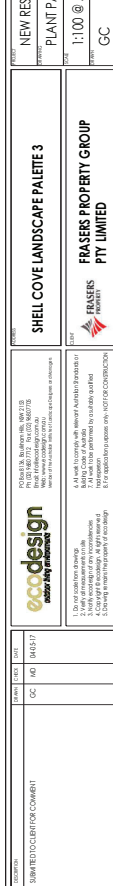
GROUND COVERS



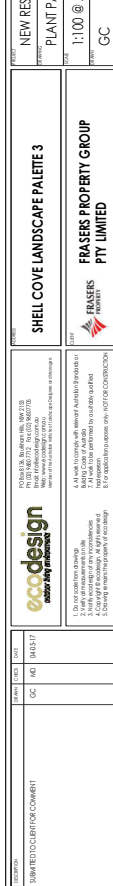
GROUND COVERS



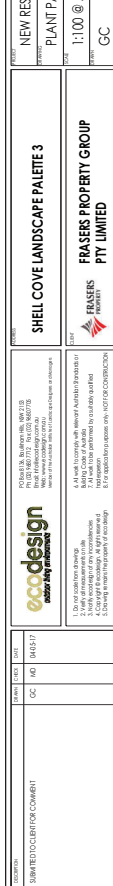
GROUND COVERS



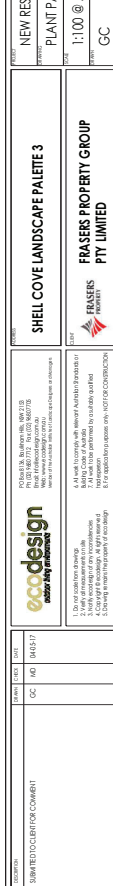
GROUND COVERS



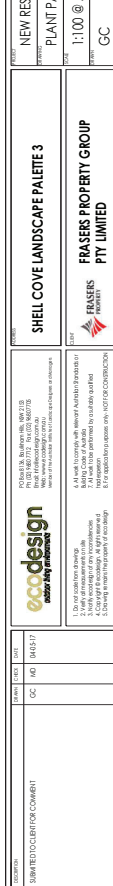
GROUND COVERS



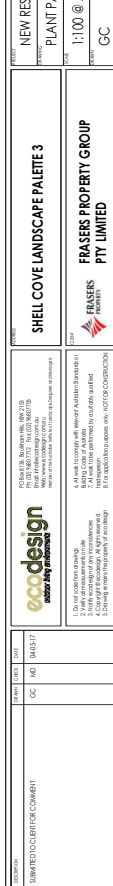
GROUND COVERS



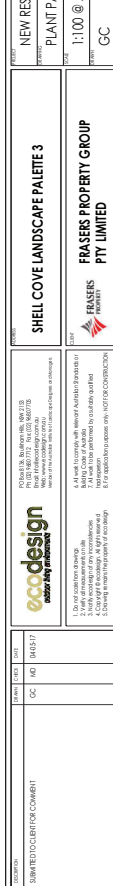
GROUND COVERS



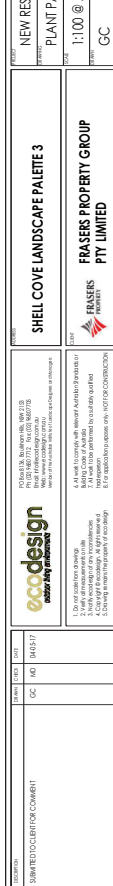
GROUND COVERS



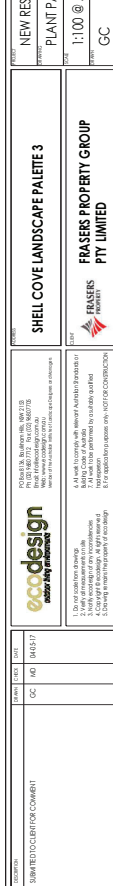
GROUND COVERS



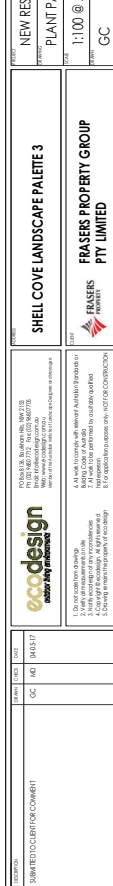
GROUND COVERS



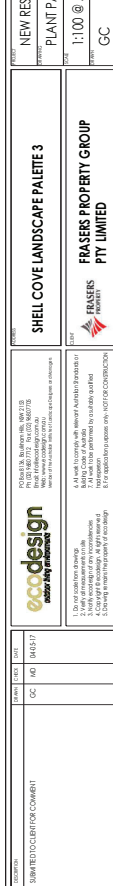
GROUND COVERS



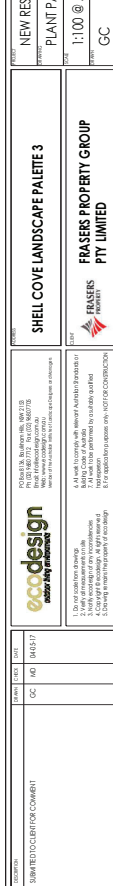
GROUND COVERS



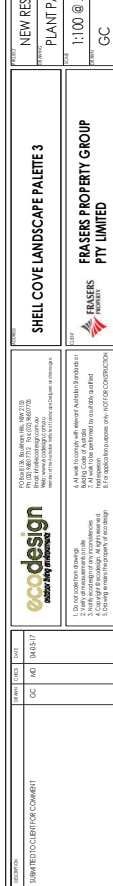
GROUND COVERS



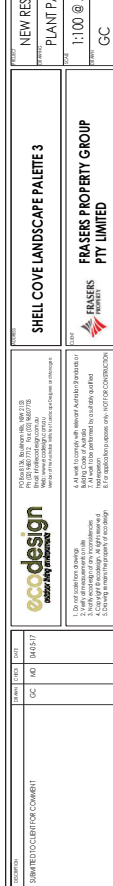
GROUND COVERS



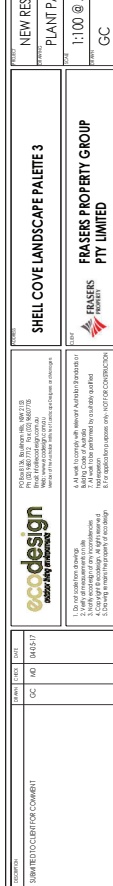
GROUND COVERS



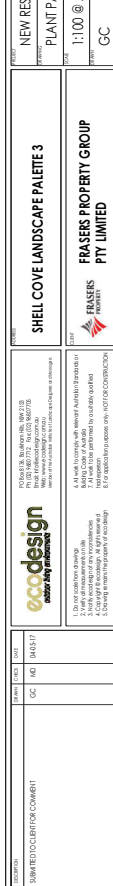
GROUND COVERS



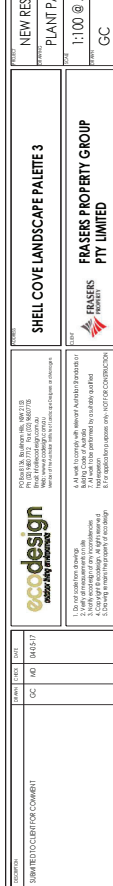
GROUND COVERS



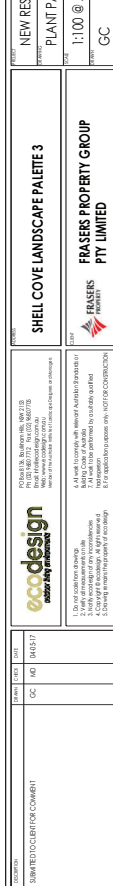
GROUND COVERS



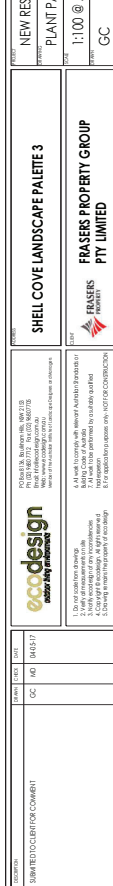
GROUND COVERS



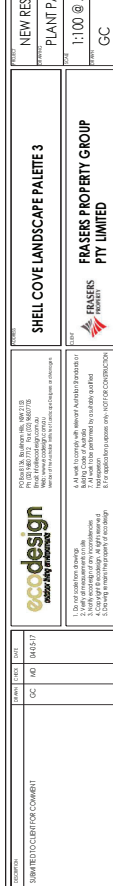
GROUND COVERS



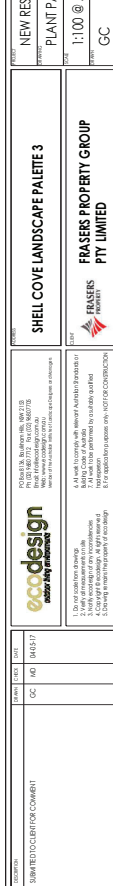
GROUND COVERS



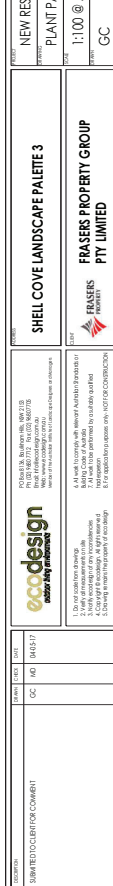
GROUND COVERS



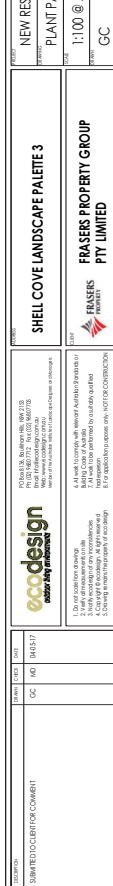
GROUND COVERS



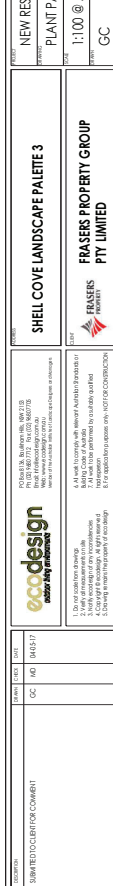
GROUND COVERS



GROUND COVERS



GROUND COVERS



GROUND COVERS

